



We receive awards and recognitions for our quality!

# PSL

NO.83-1409A



## Quick Change For Lathe

# SYIC



Headquarter-Taiwan

## Company Introduction

Shin-Yain Industrial Company was established in 1979. Presently, we have nine factories, which specialize in manufacturing precise tool holders, cutting tools, and accessories for lathes, milling machines, CNC machining centers, mill-turn machines, etc.

For more than 30 years, SYIC sticks to upgrade the industry and holds a principle, "Quality creates reputation; reputation ensures quality" to pass the accreditation of ISO-9001 Quality Management System and ISO14001 Environmental Management System. With the establishment of ISO-9001 Quality Management System and ISO14001 Environmental Management System, it helps us to ensure and raise the quality of our company's products and make them improve steadily. Our goal is to promote SYIC to countries worldwide and make SYIC as an international brand.

SYIC has produced 120 different kinds of products, which have 10,000 kinds of types. With nine factories, we have very sufficient stock. Now we have over 450 professional technicians. Also, we have set up professional examination department and precise instrument department to be in charge of examining the taper, concentricity, surface roughness, roundness and balancing of tool holders, cutting tools and other machine accessories.

Vice-president  
Steven C.D Chen

President  
Simon C.T Chen

General Manager  
Scott C.C Chen



## Advanced Manufacturing Capabilities

Concerning the manufacturing equipment, we have CNC computer lathes, CNC machining centers, CNC 5 axis machining centers, universal external and internal cylindrical grinding machines, CNC cylindrical grinding machines, CNC internal grinding machines, auto-hydraulic internal grinding machines, external grinding machines, plane grinding machines, threading machines, etc.



**UNIVERSAL EXTERNAL AND INTERNAL CYLINDRICAL GRINDING MACHINE**

**STOCK AREA**



**GRINDING MACHINE WITH ROBOT ARM**



**CNC LATHE WITH AUTOMATIC FEEDING EQUIPMENT**



**CNC 5 AXIS MACHINING CENTER**



**CNC LATHE WITH ROBOT**



**CNC LATHE WITH AUTOMATIC FEEDING EQUIPMENT**



**DIGITAL LINEAR SCALE TOOL PRE-SETTER**

**ROUNDNESS MEASURING MACHINE**



**BALANCE MACHINE**

**HORIZONTAL/VERTICAL MEASURING INSTRUMENT**

**3D COORDINATE MEASURING MACHINE**

## R&D Team Expertise

SYIC has set up a design dept. and R&D dept, which focus on developing and improving products. Each year we develop new and advanced products. At present, we own 121 Taiwan's patents and 120 oversea patents.

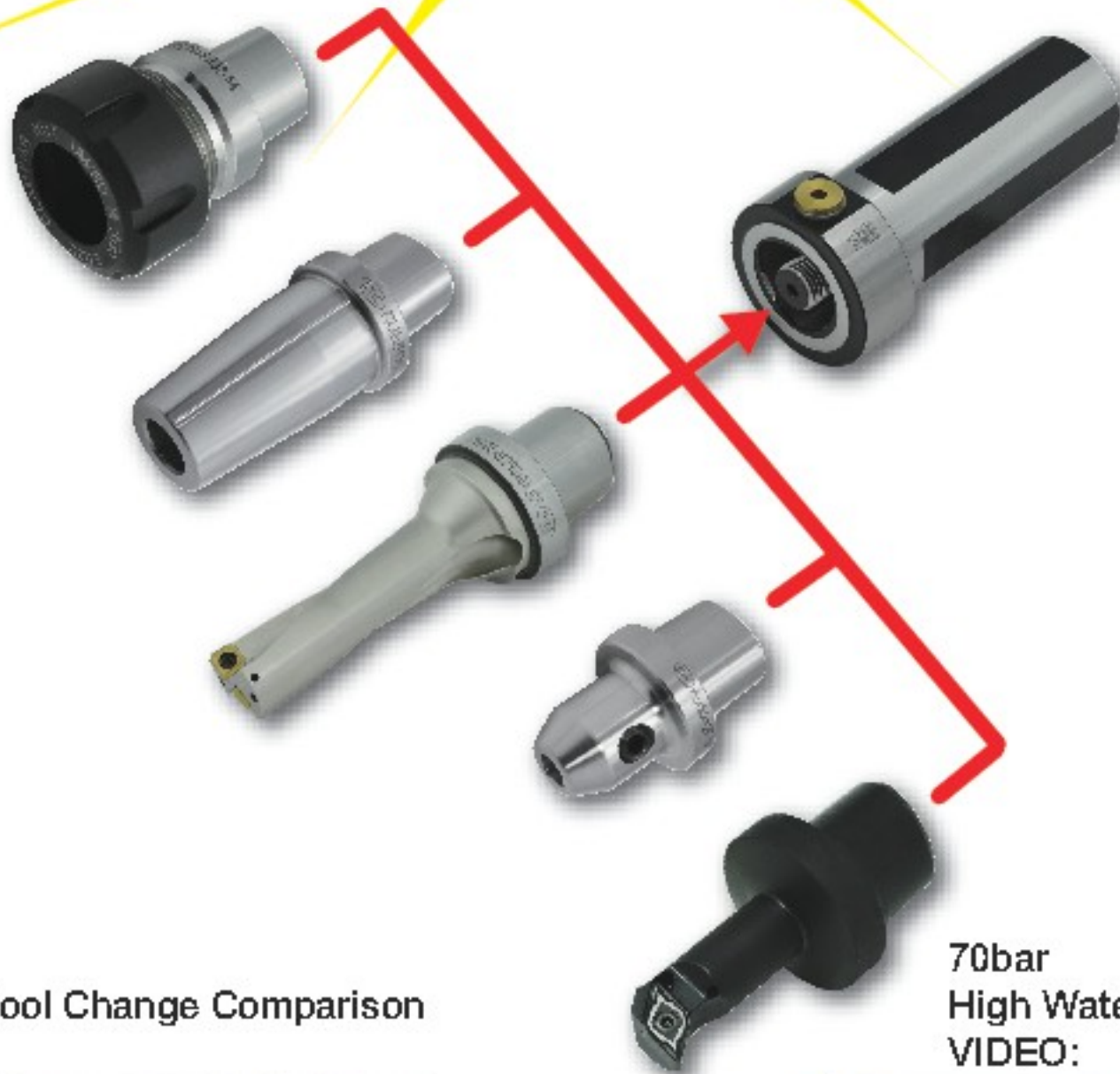
Our products can be categorized into NT, MT, BT (JIS B6339), DAT( DIN69871), CAT(ANSI B5.50), HSK(DIN69893), PSC(ISO26623-1), VDI(DIN ISO10889), angle head holder, cutting tool, edge finder, Z axial preset gauge, 3D tester and OEM products, etc. The products produced by SYIC have a complete guarantee in quality and quantity. Hence, the products manufactured by SYIC can help its distributors in the world win the trust from their customers and bring more wealth for them. Welcome old and new customers to support SYIC and purchase all the products produced by SYIC.





# PSL system for lathe

## SAVE YOUR TIME



PSL Quick Tool Change Comparison VIDEO:



70bar High Water Pressure Drilling VIDEO:



### Quick Change

tool change :  
time

**Before** ER collet chuck  $\geq 3\text{Mins}$

**Now** PSLsystem = 30S

### Efficiency improves!

G01  
Z-120:  
( $\phi 14$ )

**Before** ER collet chuck F0.1  
**84S**

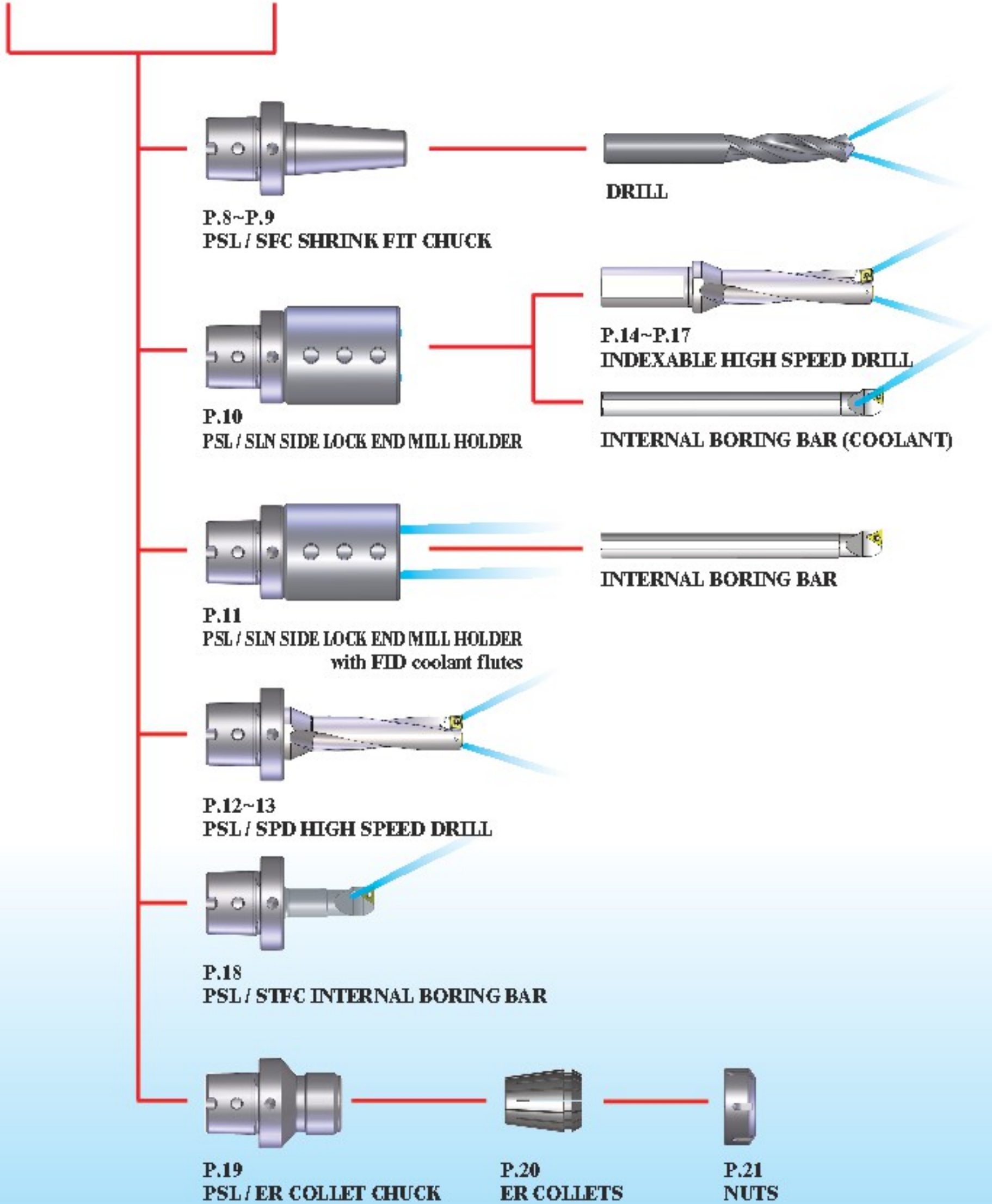
**Now** PSLsystem +70bar F0.25  
**30S**



**P.23  
AL ADAPTER FOR LATHE**

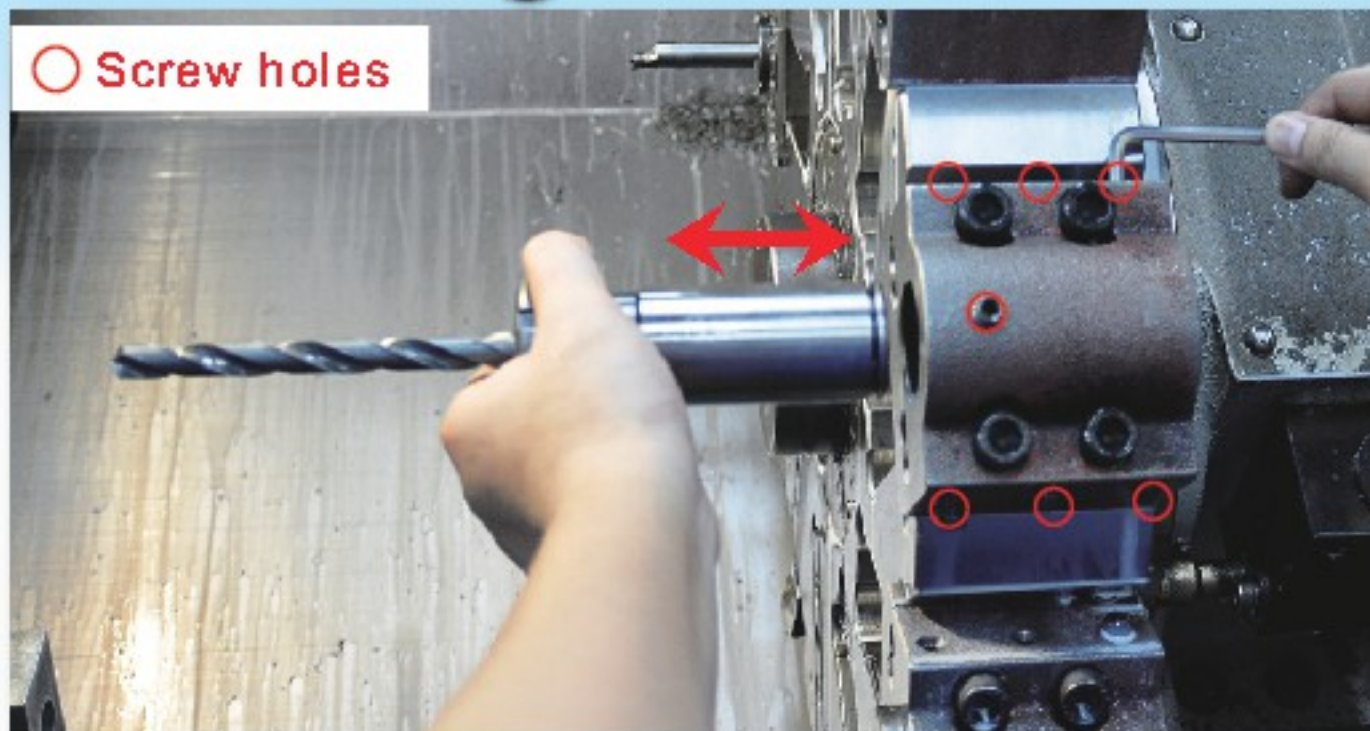


**P.25  
ONE-PIECE TOOL POST**



## Traditional

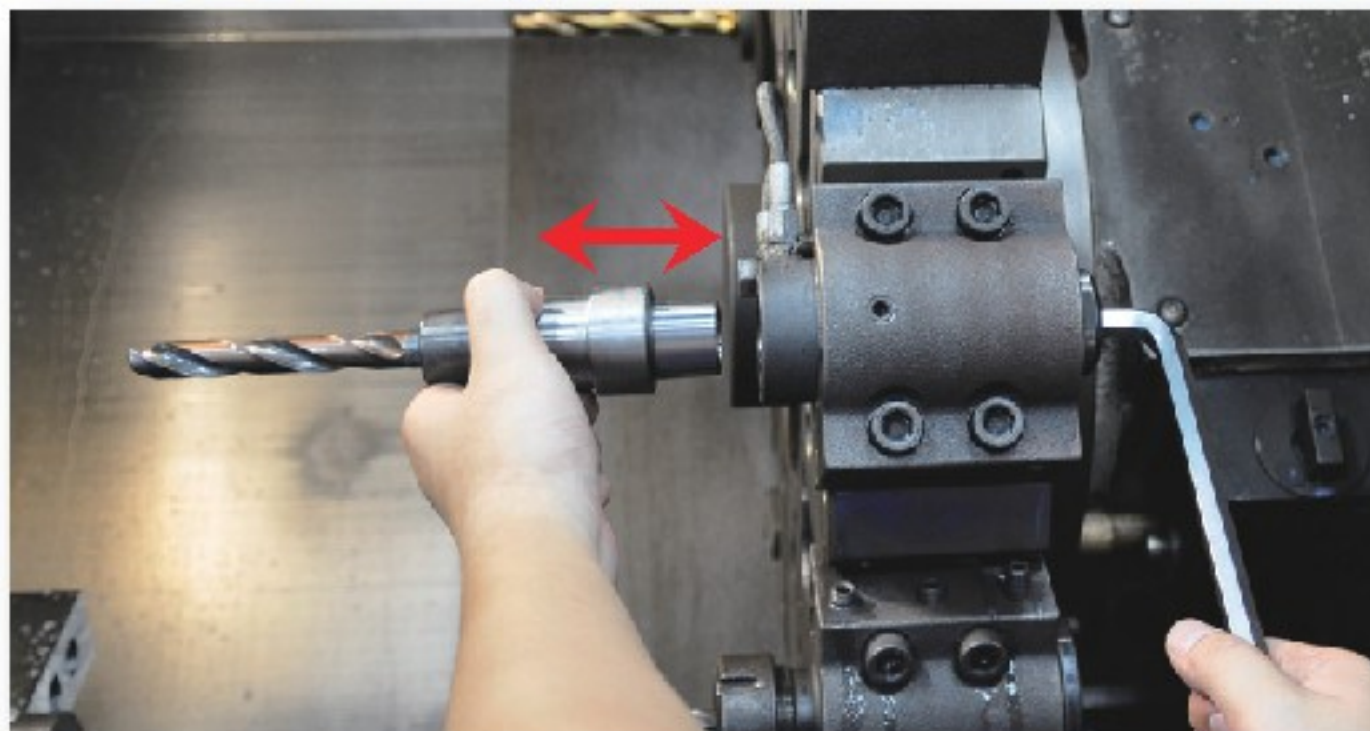
**Tool change time:  $\geq 3$  mins**



To use the traditional ER chuck, the screws circled in red need to be loosened first, then insert the holders into the tool post and fasten, which waste time and energy.

**New!**

**Tool change time = 30 seconds**



The new AL adaptor and PSL system only require a 10mm Hex wrench to change the tool easily and quickly.

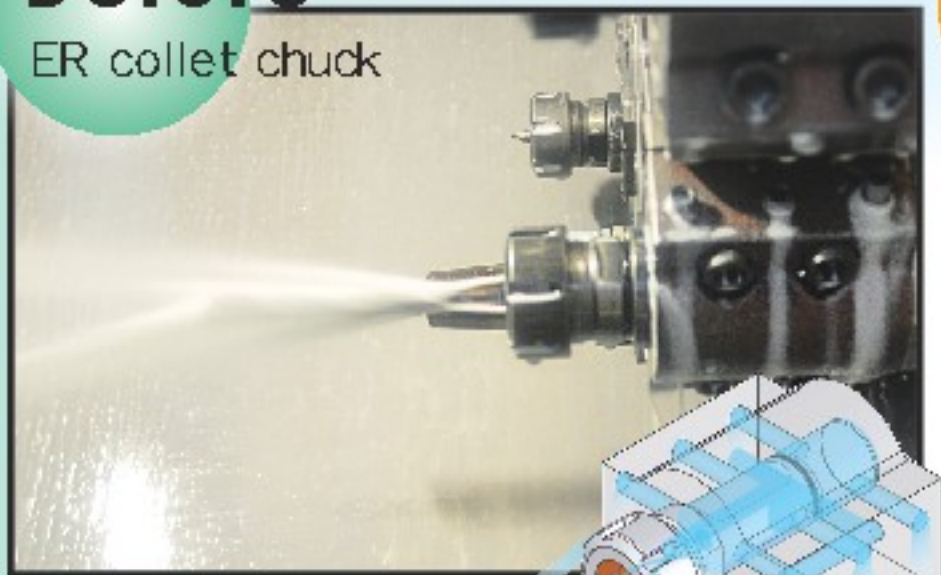
The difference of changing 6 cutters is 15 mins.  
Change the cutters 2 times saves 30 mins per day,  
660 mins per month, 7920 mins per year.



# Efficiency improves! (Coolant feed 70 bar)

## Before

ER collet chuck

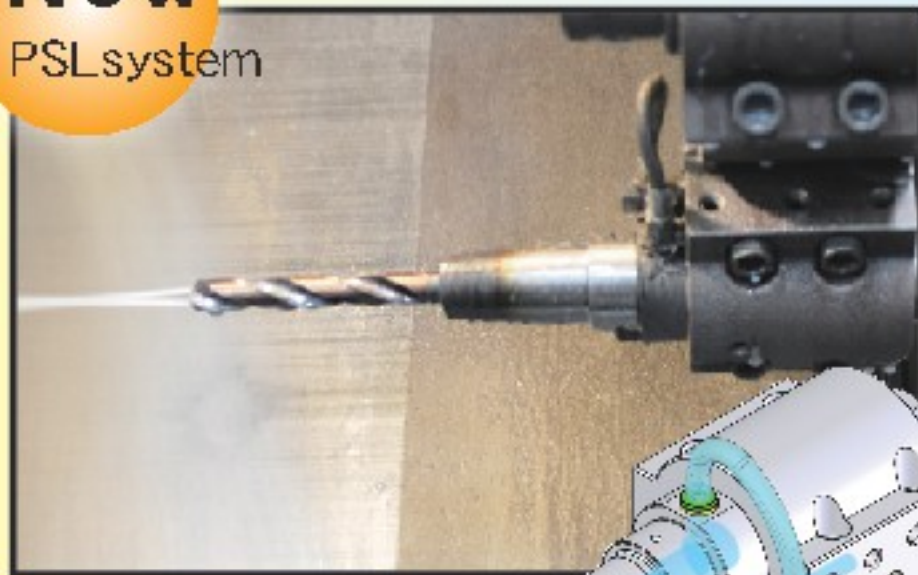


The tool post is filled with coolant and it overflows from the tool post.

Coolant feed

## Now

PSL system



When the coolant enters tool post, it goes to AL adaptor directly without dripping from the tool post.



The cutter is fastened by ER collets, so the clamping force is not big and the feed rate can't be fast.

Clamping force

The cutter is clamped by Shrink Fit Chuck. Clamping force and feed rate increase.



10mm drill bit : **72s**  
S1200 G74 R2  
G74 Z-110 Q10000 F0.1

14mm drill bit : **84s**  
S1200 G74 R2  
G74 Z-115 Q10000 F0.1

Test data

10mm drill bit : **31s**  
S1500 G1 Z-2 F0.08  
Z-110 **F0.16**

14mm drill bit : **30s**  
S1200 G1 Z-2 F0.12  
Z-115 **F0.25**



## EX: Production: 1000pcs/month

Time: 4min/part  
Total machining time

→ 1000x4min

→ **66.6hr**

PSL: Time-saving

**8.3hr**

**↑ 12.4%**

Time: 3.5min/part  
Total machining time

→ 1000x3.5min

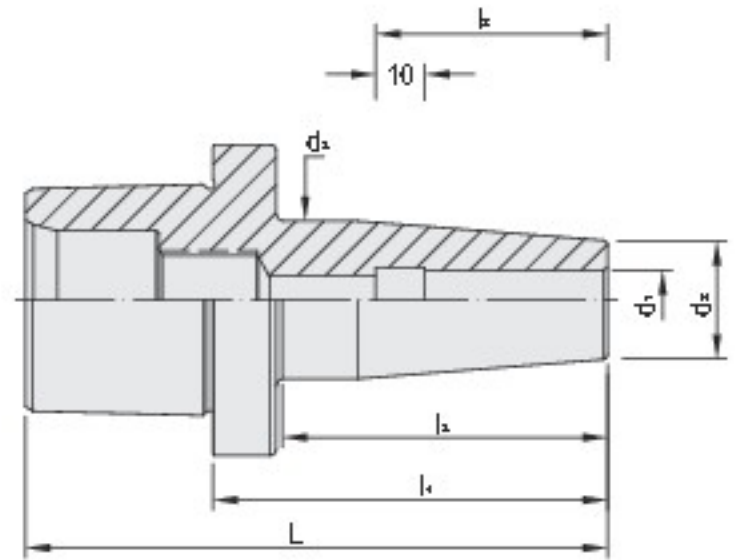
→ **58.3hr**





# PSL / SFC SHRINK FIT CHUCK

## PSL / SFC 熱膨脹刀桿



HEATING



COOLING

METRIC

MODEL NO.	TYPE	L	l <sub>1</sub>	l <sub>2</sub>	l <sub>3</sub>	d <sub>1</sub>	d <sub>2</sub>	d <sub>3</sub>	
161.651.06.050	PSL32 x SFC6 - 50	69	50	36	41	6	12	18	
161.651.08.050	PSL32 x SFC8 - 50			8		14	20		
161.651.09.050	PSL32 x SFC9 - 50			9	16	22.3			
161.651.10.050	PSL32 x SFC10 - 50			10					
161.651.11.060	PSL32 x SFC11 - 60	79	60	47	51	11	17	23	
161.651.12.060	PSL32 x SFC12 - 60			12	18	26			
162.651.06.050	PSL40 x SFC6 - 50	74	50	36	40		6	20	26
162.651.08.050	PSL40 x SFC8 - 50			8	26.5				
162.651.09.050	PSL40 x SFC9 - 50			9			30		
162.651.10.050	PSL40 x SFC10 - 50			10					
162.651.11.060	PSL40 x SFC11 - 60	84	60	37	51	11	24	32	
162.651.12.060	PSL40 x SFC12 - 60			12					
162.651.13.060	PSL40 x SFC13 - 60			13		27	34		
162.651.14.060	PSL40 x SFC14 - 60			14					
162.651.16.060	PSL40 x SFC16 - 60	16	33	40					
162.651.18.060	PSL40 x SFC18 - 60	18							
162.651.20.065	PSL40 x SFC20 - 65	89	65	52	57	20			

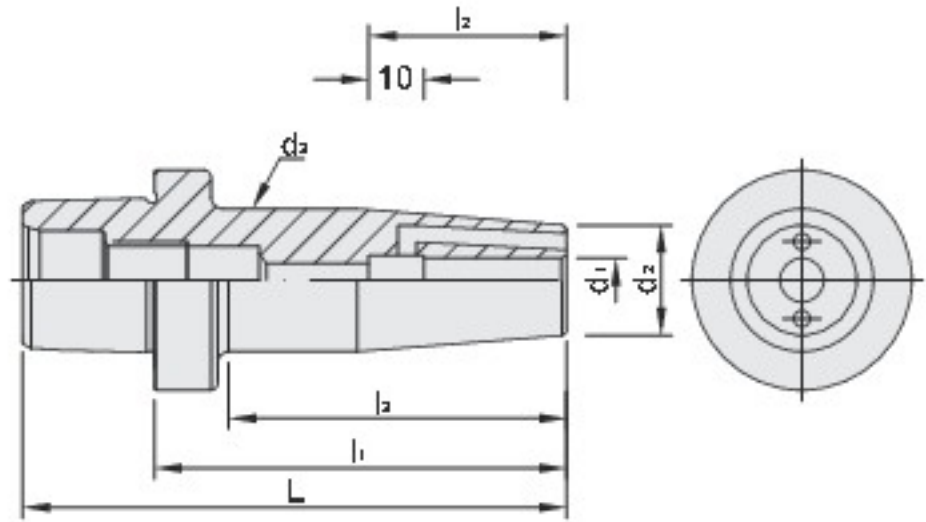
INCHES

MODEL NO.	TYPE	L	l <sub>1</sub>	l <sub>2</sub>	l <sub>3</sub>	d <sub>1</sub>	d <sub>2</sub>	d <sub>3</sub>
161.651.54.200	PSL32 x SFC1/4" - 2"	2.748	2	1.417	1.646	0.25	0.709	0.945
161.651.55.200	PSL32 x SFC5/16" - 2"			1.654	1.649	0.375	0.945	1.206
161.651.56.200	PSL32 x SFC3/8" - 2"			1.85	2.047	0.5	1.102	1.339
161.651.58.236	PSL32 x SFC1/2" - 2.36"	3.11	2.36					
162.651.54.200	PSL40 x SFC1/4" - 2"	2.945	2	1.417	1.606	0.25	0.709	0.945
162.651.55.200	PSL40 x SFC5/16" - 2"			0.3125	0.79	1.195		
162.651.56.200	PSL40 x SFC3/8" - 2"			2.835	1.646	0.375	0.945	1.195
162.651.58.250	PSL40 x SFC1/2" - 2.5"	3.45	2.5	1.85	2.146	0.5	1.102	1.339
162.651.61.250	PSL40 x SFC5/8" - 2.5"			1.969		0.625	1.063	
162.651.64.250	PSL40 x SFC3/4" - 2.5"			2.047	2.185	0.75	1.417	1.654



# PSL / SFC SHRINK FIT CHUCK with CP coolant hole type

## PSL / SFC 熱膨脹刀桿



- Coolant hole design (CP) on the front nose of PSLxSFC Shrink Fit Chuck could centralize coolant, improve the metal chips removal capability, cool down the workpiece, and improve the surface precision of workpiece.
- Useful for cutting tools without coolant holes.



HEATING



COOLING

METRIC

MODEL NO.	TYPE	L	l <sub>1</sub>	l <sub>2</sub>	l <sub>3</sub>	d <sub>1</sub>	d <sub>2</sub>	d <sub>3</sub>	
161.651.06.050B	PSL32 x SFC6 - 50 CP	69	50	36	41	6	21	27	
161.651.08.050B	PSL32 x SFC8 - 50 CP			8					
161.651.09.050B	PSL32 x SFC9 - 50 CP			9					
161.651.10.050B	PSL32 x SFC10 - 50 CP			10					
161.651.11.060B	PSL32 x SFC11 - 60 CP	79	60	47	51	11	24	30.5	
161.651.12.060B	PSL32 x SFC12 - 60 CP			12					
162.651.06.050B	PSL40 x SFC6 - 50 CP	74	50	36	40	6		21	27
162.651.08.050B	PSL40 x SFC8 - 50 CP			8					
162.651.09.050B	PSL40 x SFC9 - 50 CP			9					
162.651.10.050B	PSL40 x SFC10 - 50 CP			10					
162.651.11.060B	PSL40 x SFC11 - 60 CP	84	60	47	51	11	24	32	
162.651.12.060B	PSL40 x SFC12 - 60 CP					12			
162.651.13.060B	PSL40 x SFC13 - 60 CP					13			
162.651.14.060B	PSL40 x SFC14 - 60 CP					14			
162.651.16.060B	PSL40 x SFC16 - 60 CP	89	65	50	52	16	27	34	
162.651.18.060B	PSL40 x SFC18 - 60 CP					18			
162.651.20.065B	PSL40 x SFC20 - 65 CP					20			
									33

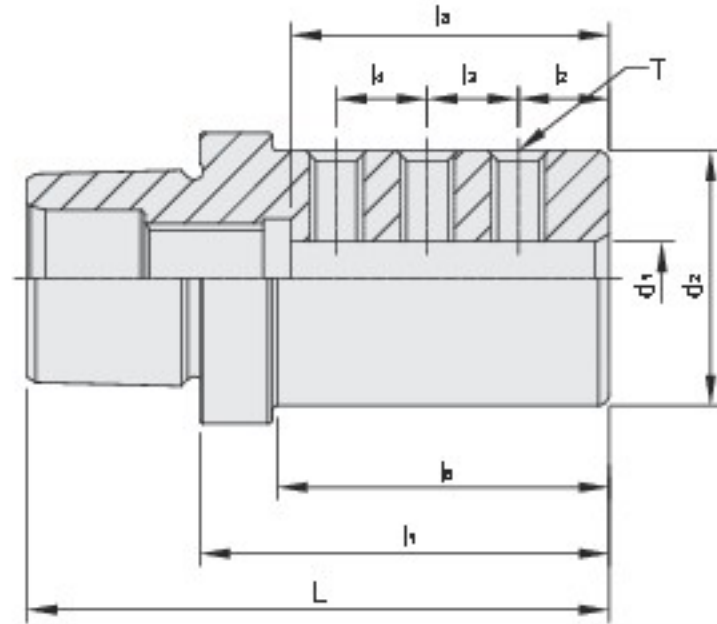
INCHES

MODEL NO.	TYPE	L	l <sub>1</sub>	l <sub>2</sub>	l <sub>3</sub>	d <sub>1</sub>	d <sub>2</sub>	d <sub>3</sub>	
161.651.54.200B	PSL32 x SFC1/4" - 2" CP	2.748	2	1.417	1.646	0.25	0.709	0.945	
161.651.55.200B	PSL32 x SFC5/16" - 2" CP			1.654		0.375			
161.651.56.200B	PSL32 x SFC3/8" - 2" CP			1.649		0.945			
161.651.58.236B	PSL32 x SFC1/2" - 2.36" CP	3.11	2.36	1.85	2.047	0.5	1.102	1.339	
162.651.54.200B	PSL40 x SFC1/4" - 2" CP	2.945	2	1.417	1.606	0.25	0.709	0.945	
162.651.55.200B	PSL40 x SFC5/16" - 2" CP			0.3125		0.79			
162.651.56.200B	PSL40 x SFC3/8" - 2" CP			2.835		1.646			0.375
162.651.58.250B	PSL40 x SFC1/2" - 2.5" CP	3.45	2.5	1.85	2.146	0.5	1.102	1.339	
162.651.61.250B	PSL40 x SFC5/8" - 2.5" CP			1.969		0.625			1.063
162.651.64.250B	PSL40 x SFC3/4" - 2.5" CP			2.047		2.185			0.75



# PSL / SLN SIDE LOCK END MILL HOLDER

## PSL / SLN 側固式立銑刀柄



### METRIC

MODEL NO.	TYPE - d <sub>1</sub>	L	l <sub>1</sub>	l <sub>2</sub>	l <sub>3</sub>	l <sub>4</sub>	l <sub>5</sub>	l <sub>6</sub>	d <sub>2</sub>	T
161.653.06.045	PSL32 x SLN6 - 45	64	45	10	10	-	36	36	25	M6
161.653.08.045	PSL32 x SLN8 - 45					10	35	36.5	28	
161.653.10.050	PSL32 x SLN10 - 50	69	50	8	12	12	39	40.5	32	M8
161.653.12.055	PSL32 x SLN12 - 55	74	55	15	15	-	44	47		
161.653.14.055	PSL32 x SLN14 - 55					79	60	8		
161.653.16.060	PSL32 x SLN16 - 60	55	50							
161.653.18.060	PSL32 x SLN18 - 60	69	45	10	10	-	35	32	25	M6
161.653.20.060	PSL32 x SLN20 - 60					10	33	28		
162.653.06.045	PSL40 x SLN6 - 45	74	50	8	12	12	39	39.5	35	M8
162.653.08.045	PSL40 x SLN8 - 45	79	55	15	15	-	44	47	40	
162.653.10.050	PSL40 x SLN10 - 50					84	60	8		
162.653.12.055	PSL40 x SLN12 - 55	50	52							
162.653.14.055	PSL40 x SLN14 - 55	89	65	8	12	12	50	50	52	M8
162.653.16.055	PSL40 x SLN16 - 55						51	57		
162.653.18.060	PSL40 x SLN18 - 60	89	65	8	12	12	51	57	50	M8
162.653.20.060	PSL40 x SLN20 - 60	99	75	12	18	18	61	67	50	
162.653.25.065	PSL40 x SLN25 - 65						51	57		
162.653.32.075	PSL40 x SLN32 - 75						61	67	50	

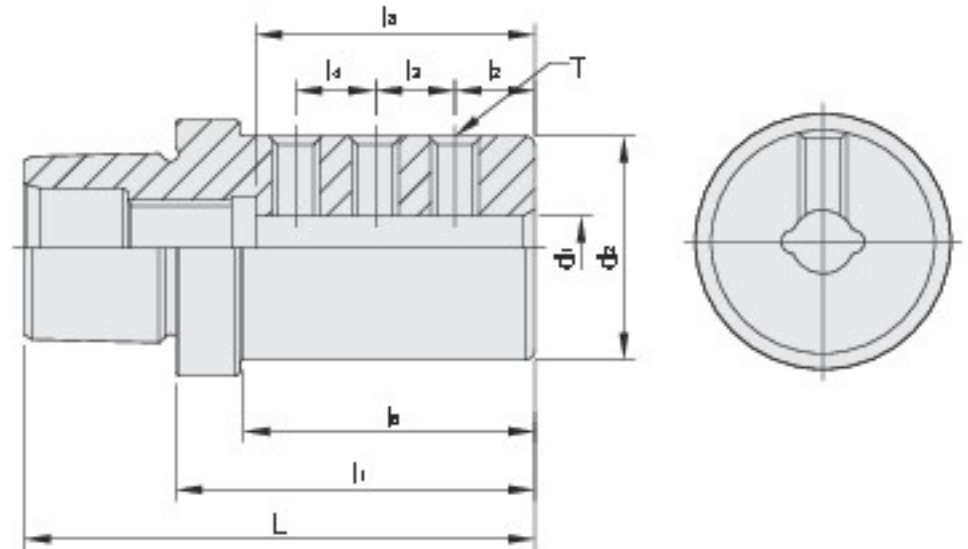
### INCHES

MODEL NO.	TYPE - d <sub>1</sub>	L	l <sub>1</sub>	l <sub>2</sub>	l <sub>3</sub>	l <sub>4</sub>	l <sub>5</sub>	l <sub>6</sub>	d <sub>2</sub>	T
161.653.54.177	PSL32 x SLN 1/4" - 1.77"	2.519	1.77	0.394	0.394	-	1.38	1.417	0.78	1/4"-28
161.653.55.177	PSL32 x SLN 5/16" - 1.77"					1.378	0.88			
161.653.56.197	PSL32 x SLN 3/8" - 1.97"	2.717	1.97	0.315	0.472	0.472	1.535	1.575	1.00	5/16"-24
161.653.58.217	PSL32 x SLN 1/2" - 2.17"	2.913	2.17	0.591	0.591	-	1.732	1.85	1.25	
162.653.54.177	PSL40 x SLN 1/4" - 1.77"	2.72	1.77	0.394	0.394	-	1.38	1.26	0.78	1/4"-28
162.653.55.177	PSL40 x SLN 5/16" - 1.77"					1.339	0.88			
162.653.56.197	PSL40 x SLN 3/8" - 1.97"	2.91	1.97	0.315	0.472	0.472	1.535	1.535	1.00	5/16"-24
162.653.58.217	PSL40 x SLN 1/2" - 2.17"	3.11	2.17	0.591	0.591	-	1.732	1.811	1.25	
162.653.59.217	PSL40 x SLN 9/16" - 2.17"					1.85	1.831	1.437		
162.653.61.217	PSL40 x SLN 5/8" - 2.17"			0.315	0.472	0.472	1.73	1.813	1.5	



# PSL / SLN SIDE LOCK END MILL HOLDER with FID coolant flutes

## PSL / SLN 側固式立銑刀柄(出水槽型)



- Coolant flute design (FID) on the front nose of PSLxSLN End Mill Holder could centralize coolant, improve the metal chips removal capability, cool down the workpiece, and improve the surface precision of workpiece.
- Useful for cutting tools without coolant holes.



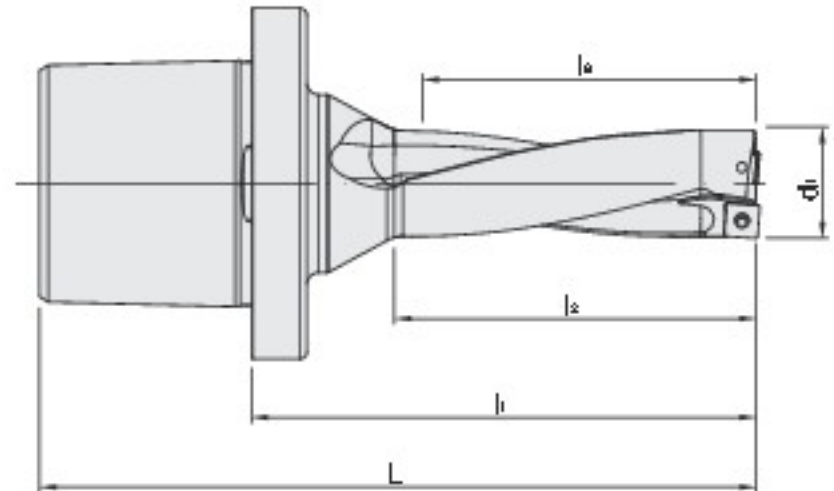
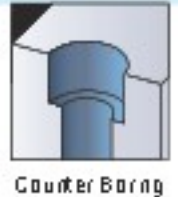
### METRIC

MODEL NO.	TYPE - d <sub>1</sub>	L	l <sub>1</sub>	l <sub>2</sub>	l <sub>3</sub>	l <sub>4</sub>	l <sub>5</sub>	l <sub>6</sub>	d <sub>2</sub>	T
161.653.06.045B	PSL32 x SLN6 - 45 FID	64	45	10	10	-	36	36	25	M6
161.653.08.045B	PSL32 x SLN8 - 45 FID					10	35	36.5	28	
161.653.10.050B	PSL32 x SLN10 - 50 FID	69	50	8	12	12	39	40.5	32	M8
161.653.12.055B	PSL32 x SLN12 - 55 FID	74	55	15	15	-	44	47		
161.653.14.055B	PSL32 x SLN14 - 55 FID					79	60	8		
161.653.16.060B	PSL32 x SLN16 - 60 FID	55	50							
162.653.06.045B	PSL40 x SLN6 - 45 FID	69	45	10	10	-	35	32	25	M6
162.653.08.045B	PSL40 x SLN8 - 45 FID	74	50	8	12	12	39	39.5	35	
162.653.10.050B	PSL40 x SLN10 - 50 FID	79	55	15	15	-	44	47	40	M8
162.653.12.055B	PSL40 x SLN12 - 55 FID					84	60	8		
162.653.14.055B	PSL40 x SLN14 - 55 FID	55	50							
162.653.16.055B	PSL40 x SLN16 - 55 FID	89	65			51	57			
162.653.18.060B	PSL40 x SLN18 - 60 FID	99	75	12	18	18	61	67	50	
162.653.20.060B	PSL40 x SLN20 - 60 FID									
162.653.25.065B	PSL40 x SLN25 - 65 FID									
162.653.32.075B	PSL40 x SLN32 - 75 FID									

### INCHES

MODEL NO.	TYPE - d <sub>1</sub>	L	l <sub>1</sub>	l <sub>2</sub>	l <sub>3</sub>	l <sub>4</sub>	l <sub>5</sub>	l <sub>6</sub>	d <sub>2</sub>	T
161.653.54.177B	PSL32 x SLN 1/4" - 1.77" FID	2.519	1.77	0.394	0.394	-	1.38	1.417	0.78	1/4"-28
161.653.55.177B	PSL32 x SLN 5/16" - 1.77" FID					1.378	0.88			
161.653.56.197B	PSL32 x SLN 3/8" - 1.97" FID	2.717	1.97	0.315	0.472	0.472	1.535	1.575	1.00	5/16"-24
161.653.58.217B	PSL32 x SLN 1/2" - 2.17" FID	2.913	2.17	0.591	0.591	-	1.732	1.85	1.25	
162.653.54.177B	PSL40 x SLN 1/4" - 1.77" FID	2.72	1.77	0.394	0.394	-	1.38	1.26	0.78	1/4"-28
162.653.55.177B	PSL40 x SLN 5/16" - 1.77" FID					1.339	0.88			
162.653.56.197B	PSL40 x SLN 3/8" - 1.97" FID	2.91	1.97	0.315	0.472	0.472	1.535	1.535	1.00	5/16"-24
162.653.58.217B	PSL40 x SLN 1/2" - 2.17" FID	3.11	2.17	0.591	0.591	-	1.732	1.811	1.25	
162.653.59.217B	PSL40 x SLN 9/16" - 2.17" FID					1.85	1.831	1.437		
162.653.61.217B	PSL40 x SLN 5/8" - 2.17" FID	0.315	0.472	0.472	1.73	1.813	1.5			

### PSL / SPD 一體式快速鑽頭



● ACCESSORIES:

INSERT	SCREW	WRENCH
SP..0502	M2-4.3-2.7-60	T6
SP..0602	M2.2-5.2-3.1-60	T7
SP..07T3	M2.5-6.33-3.5-48	T8
SP..0904	M3.5-8.4-5.0-60	T10

- Drilling depth is three times longer than the diameter of the High Speed Drill.
- The material is anti-vibration tool steel.
- The whole body is treated with fine grinding after hardening in order to raise the rigidity and stability and prevent from deformation.
- There is special coating on the surface of the high speed drill, which decreases the wear rate and extends the use life of the drill.

MODEL NO.	TYPE	d <sub>1</sub>	L	l <sub>1</sub>	l <sub>2</sub>	l <sub>3</sub>	INSERT
162.685.15.045	PSL40 x SPD 15 - 3D - 45	15	82	70	50	45	SP..0602
162.685.16.048	PSL40 x SPD 16 - 3D - 48	16	86	74	53	48	
162.685.17.051	PSL40 x SPD 17 - 3D - 51	17	89	77	56	51	
162.685.18.054	PSL40 x SPD 18 - 3D - 54	18	93	81	59	54	
162.685.19.057	PSL40 x SPD 19 - 3D - 57	19	96	84	62	57	
162.685.20.060	PSL40 x SPD 20 - 3D - 60	20	101	89	65	60	
162.685.21.063	PSL40 x SPD 21 - 3D - 63	21	104	92	68	63	SP..07T3
162.685.22.066	PSL40 x SPD 22 - 3D - 66	22	107	95	71	66	
162.685.23.069	PSL40 x SPD 23 - 3D - 69	23	111	99	74	69	
162.685.24.072	PSL40 x SPD 24 - 3D - 72	24	115	103	77	72	
162.685.25.075	PSL40 x SPD 25 - 3D - 75	25	119	107	80	75	
162.685.26.078	PSL40 x SPD 26 - 3D - 78	26	122	110	83	78	
162.685.27.081	PSL40 x SPD 27 - 3D - 81	27	125	113	86	81	SP..0904
162.685.28.084	PSL40 x SPD 28 - 3D - 84	28	129	117	89	84	
162.685.29.087	PSL40 x SPD 29 - 3D - 87	29	132	120	92	87	
162.685.30.090	PSL40 x SPD 30 - 3D - 90	30	135	123	95	90	

MODEL NO.	TYPE	d <sub>1</sub>	L	l <sub>1</sub>	l <sub>2</sub>	l <sub>3</sub>	INSERT
162.685.15.5.047	PSL40 x SPD 15.5 - 3D - 47	15.5	96	84	52	47	SP..0602
162.685.16.5.050	PSL40 x SPD 16.5 - 3D - 50	16.5	100	88	55	50	
162.685.17.5.053	PSL40 x SPD 17.5 - 3D - 53	17.5	104	92	58	53	
162.685.18.5.056	PSL40 x SPD 18.5 - 3D - 56	18.5	107	95	61	56	
162.685.20.62.062	PSL40 x SPD 20.62 - 3D - 62	20.62	115	103	67	62	SP..07T3
162.685.22.23.067	PSL40 x SPD 22.23 - 3D - 67	22.23	120	108	72	67	
162.685.25.4.077	PSL40 x SPD 25.4 - 3D - 77	25.4	133	121	82	77	SP..0904
162.685.28.59.086	PSL40 x SPD 28.59 - 3D - 86	28.59	143	131	91	86	

● Inserts are optional accessories. Needs to be purchased additionally.



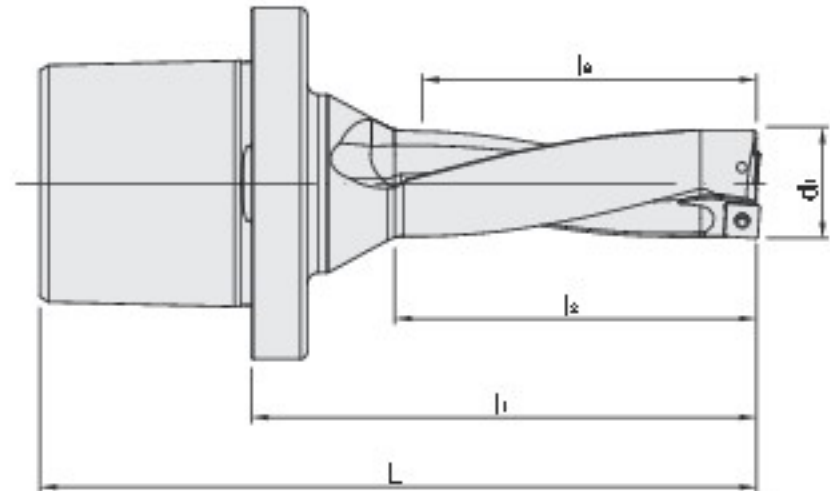
# PSL / SPD HIGH SPEED DRILL

one-piece type

## PSL / SPD 一體式快速鑽頭



Counter Boring



● ACCESSORIES:

INSERT	SCREW	WRENCH
SP..0502	M2-4.3-2.7-60	T6
SP..0602	M2.2-5.2-3.1-60	T7
SP..07T3	M2.5-6.33-3.5-48	T8
SP..0904	M3.5-8.4-5.0-60	T10

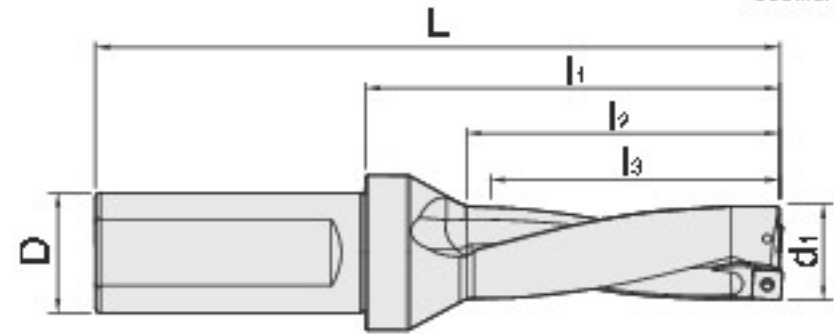
- Drilling depth is three times longer than the diameter of the High Speed Drill.
- The material is anti-vibration tool steel.
- The whole body is treated with fine grinding after hardening in order to raise the rigidity and stability and prevent from deformation.
- There is special coating on the surface of the high speed drill, which decreases the wear rate and extends the use life of the drill.

MODEL NO.	TYPE	d <sub>1</sub>	L	l <sub>1</sub>	l <sub>2</sub>	l <sub>3</sub>	INSERT
162.685.17.068	PSL40 x SPD17 -4D - 68	17	118	106	73	68	SP..0602
162.685.18.072	PSL40 x SPD18 -4D - 72	18	123	111	77	72	
162.685.19.076	PSL40 x SPD19 -4D - 76	19	127	115	81	76	
162.685.20.080	PSL40 x SPD20 -4D - 80	20	133	121	85	80	
162.685.21.084	PSL40 x SPD21 -4D - 84	21	137	125	89	84	
162.685.22.088	PSL40 x SPD22 -4D - 88	22	141	129	93	88	SP..07T3
162.685.23.092	PSL40 x SPD23 -4D - 92	23	146	134	97	92	
162.685.24.096	PSL40 x SPD24 -4D - 96	24	151	139	101	96	
162.685.25.100	PSL40 x SPD25 -4D - 100	25	156	144	105	100	
162.685.26.104	PSL40 x SPD26 -4D - 104	26	160	148	109	104	
162.685.27.108	PSL40 x SPD27 -4D - 108	27	164	152	113	108	SP..0904
162.685.28.112	PSL40 x SPD28 -4D - 112	28	169	157	117	112	
162.685.29.116	PSL40 x SPD29 -4D - 116	29	173	161	121	116	
162.685.30.120	PSL40 x SPD30 -4D - 120	30	177	165	125	120	

MODEL NO.	TYPE	d <sub>1</sub>	L	l <sub>1</sub>	l <sub>2</sub>	l <sub>3</sub>	INSERT
162.685.17.5.070	PSL40 x SPD17.5 - 4D - 70	17.5	121	109	75	70	SP..0602
162.685.18.5.074	PSL40 x SPD18.5 - 4D - 74	18.5	125	113	79	74	
162.685.20.62.083	PSL40 x SPD20.62 - 4D - 83	20.62	136	124	88	83	
162.685.22.23.089	PSL40 x SPD22.23 - 4D - 89	22.23	142	130	94	89	SP..07T3
162.685.25.4.102	PSL40 x SPD25.4 - 4D - 102	25.4	158	146	107	102	SP..0904
162.685.28.59.115	PSL40 x SPD28.59 - 4D - 115	28.59	172	160	120	115	

● Inserts are optional accessories. Needs to be purchased additionally.

## SPD 捨棄式快速鑽頭



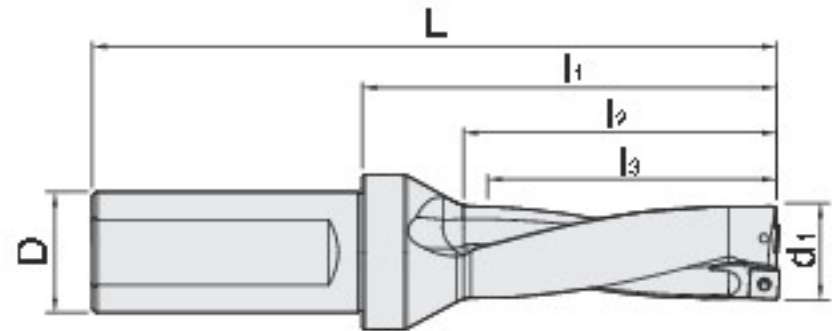
- Drilling depth is three times longer than the diameter of the High Speed Drill.
- The material is anti-vibration tool steel.
- The whole body is treated with fine grinding after hardening in order to raise the rigidity and stability and prevent from deformation.
- There is special coating on the surface of the high speed drill, which decreases the wear rate and extends the use life of the drill.

MODEL NO.	TYPE	D	d <sub>1</sub>	L	l <sub>1</sub>	l <sub>2</sub>	l <sub>3</sub>	INSERT	SCREW	WRENCH
156.685.1325.039	SPD13-C25-3D-39L	25	13	119	63	44	39	SP..0502	M2-4.3-2.7-60	T6
156.685.1425.042	SPD14-C25-3D-42L		14	122	66	47	42			
156.685.1525.045	SPD15-C25-3D-45L		15	125	69	50	45			
156.685.1625.048	SPD16-C25-3D-48L		16	130	74	53	48			
156.685.1725.051	SPD17-C25-3D-51L		17	133	77	56	51			
156.685.1825.054	SPD18-C25-3D-54L		18	136	80	59	54			
156.685.1925.057	SPD19-C25-3D-57L		19	139	83	62	57			
156.685.2025.060	SPD20-C25-3D-60L		20	142	86	65	60			
156.685.2125.063	SPD21-C25-3D-63L		21	145	89	68	63			
156.685.2225.066	SPD22-C25-3D-66L		22	154	94	71	66			
156.685.2332.069	SPD23-C32-3D-69L	32	23	157	97	74	SP..07T3	M-2.5-6.33-3.5-48	T8	
156.685.2432.072	SPD24-C32-3D-72L		24	160	100	77				72
156.685.2532.075	SPD25-C32-3D-75L		25	163	103	80				75
156.685.2632.078	SPD26-C32-3D-78L		26	166	106	83				78
156.685.2732.081	SPD27-C32-3D-81L		27	169	109	86				81
156.685.2832.084	SPD28-C32-3D-84L		28	174	114	89				84
156.685.2932.087	SPD29-C32-3D-87L		29	177	117	92				87
156.685.3032.090	SPD30-C32-3D-90L		30	180	120	95				90
156.685.3132.093	SPD31-C32-3D-93L		31	183	123	98				93
156.685.3232.096	SPD32-C32-3D-96L		32	186	126	101				96
156.685.3332.099	SPD33-C32-3D-99L	40	33	189	129	104	SP..1104	M4-9.35-5.65-60	T15	
156.685.3432.102	SPD34-C32-3D-102L		34	192	132	107				102
156.685.3532.105	SPD35-C32-3D-105L		35	195	135	110				105
156.685.3632.108	SPD36-C32-3D-108L		36	198	138	113				108
156.685.3732.111	SPD37-C32-3D-111L		37	201	141	116				111
156.685.3832.114	SPD38-C32-3D-114L		38	204	144	119				114
156.685.3932.117	SPD39-C32-3D-117L		39	207	147	122				117
156.685.4040.120	SPD40-C40-3D-120L		40	224	154	125				120
156.685.4140.123	SPD41-C40-3D-123L		41	227	157	128				123
156.685.4240.126	SPD42-C40-3D-126L		42	230	160	131				126
156.685.4340.129	SPD43-C40-3D-129L	40	43	233	163	134	SP..1405	M5-12.8-7.0-60	T20	
156.685.4440.132	SPD44-C40-3D-132L		44	236	166	137				132
156.685.4540.135	SPD45-C40-3D-135L		45	239	169	140				135
156.685.4640.138	SPD46-C40-3D-138L		46	242	172	143				138
156.685.4740.141	SPD47-C40-3D-141L		47	245	175	146				141
156.685.4840.144	SPD48-C40-3D-144L		48	248	178	149				144
156.685.4940.147	SPD49-C40-3D-147L		49	251	181	152				147
156.685.5040.150	SPD50-C40-3D-150L		50	254	184	155				150

• Inserts are optional accessories. Needs to be purchased additionally.



## SPD 捨棄式快速鑽頭

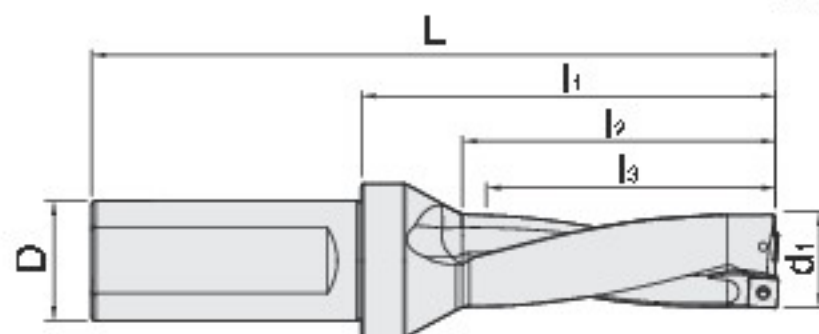
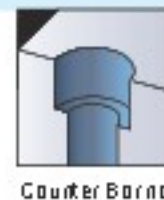


- Drilling depth is three times longer than the diameter of the High Speed Drill.
- The material is anti-vibration tool steel.
- The whole body is treated with fine grinding after hardening in order to raise the rigidity and stability and prevent from deformation.
- There is special coating on the surface of the high speed drill, which decreases the wear rate and extends the use life of the drill.

MODEL NO.	TYPE	D	d <sub>1</sub>	L	l <sub>1</sub>	l <sub>2</sub>	l <sub>3</sub>	INSERT	SCREW	WRENCH
156.685.13525.40.5	SPD13.5-C25-3D-40.5L	25	13.5	120.5	64.5	45.5	40.5	SP..0502	M2.4-3-2.7-60	T6
156.685.14525.43.5	SPD14.5-C25-3D-43.5L		14.5	123.5	67.5	48.5	43.5			
156.685.15525.46.5	SPD15.5-C25-3D-46.5L		15.5	128.5	72.5	51.5	46.5			
156.685.16525.49.5	SPD16.5-C25-3D-49.5L		16.5	131.5	75.5	54.5	49.5			
156.685.17525.52.5	SPD17.5-C25-3D-52.5L		17.5	134.5	78.5	57.5	52.5			
156.685.18525.55.5	SPD18.5-C25-3D-55.5L		18.5	137.5	81.5	60.5	55.5			
156.685.19525.58.5	SPD19.5-C25-3D-58.5L		19.5	140.5	84.5	63.5	58.5			
156.685.20525.61.5	SPD20.5-C25-3D-61.5L		20.5	143.5	87.5	66.5	61.5			
156.685.21525.64.5	SPD21.5-C25-3D-64.5L		21.5	146.5	90.5	69.5	64.5			
156.685.22532.67.5	SPD22.5-C32-3D-67.5L	32	22.5	155.5	95.5	72.5	67.5	SP..07T3	M2.5-6.33-3.5-48	T8
156.685.23532.70.5	SPD23.5-C32-3D-70.5L		23.5	158.5	98.5	75.5	70.5			
156.685.24532.73.5	SPD24.5-C32-3D-73.5L		24.5	161.5	101.5	78.5	73.5			
156.685.25532.76.5	SPD25.5-C32-3D-76.5L		25.5	164.5	104.5	81.5	76.5			
156.685.26532.79.5	SPD26.5-C32-3D-79.5L		26.5	167.5	107.5	84.5	79.5			
156.685.27532.82.5	SPD27.5-C32-3D-82.5L		27.5	170.5	110.5	87.5	82.5			
156.685.28532.85.5	SPD28.5-C32-3D-85.5L		28.5	175.5	115.5	90.5	85.5			
156.685.29532.88.5	SPD29.5-C32-3D-88.5L		29.5	178.5	118.5	93.5	88.5			
156.685.30532.91.5	SPD30.5-C32-3D-91.5L		30.5	181.5	121.5	96.5	91.5			
156.685.31532.94.5	SPD31.5-C32-3D-94.5L		31.5	184.5	124.5	99.5	94.5			
156.685.32532.97.5	SPD32.5-C32-3D-97.5L		32.5	187.5	127.5	102.5	97.5			
156.685.33532.100.5	SPD33.5-C32-3D-100.5L		33.5	190.5	130.5	105.5	100.5			

• Inserts are optional accessories. Needs to be purchased additionally.

## SPD 捨棄式快速鑽頭

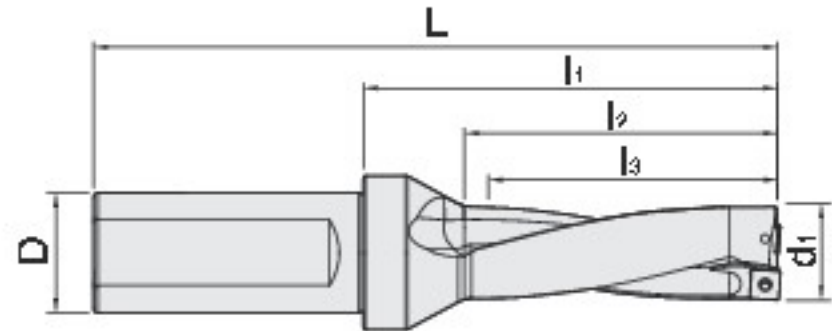


- Drilling depth is four times longer than the diameter of the High Speed Drill.
- The material is anti-vibration tool steel.
- The whole body is treated with fine grinding after hardening in order to raise the rigidity and stability and prevent from deformation.
- There is special coating on the surface of the high speed drill, which decreases the wear rate and extends the use life of the drill.

MODEL NO.	TYPE	D	d <sub>1</sub>	L	l <sub>1</sub>	l <sub>2</sub>	l <sub>3</sub>	INSERT	SCREW	WRENCH			
156.685.1325.052	SPD13 C25 4D 52L	25	13	132	76	57	52	SP..0502	M2 4.3 2.7 60	T6			
156.685.1425.056	SPD14 C25 4D 56L		14	136	80	61	56						
156.685.1525.060	SPD15 C25 4D 60L		15	140	84	65	60						
156.685.1625.064	SPD16 C25 4D 64L		16	146	90	69	64						
156.685.1725.068	SPD17 C25 4D 68L		17	150	94	73	68						
156.685.1825.072	SPD18 C25 4D 72L		18	154	98	77	72						
156.685.1925.076	SPD19 C25 4D 76L		19	158	102	81	76						
156.685.2025.080	SPD20 C25 4D 80L		20	162	106	85	80						
156.685.2125.084	SPD21 C25 4D 84L		21	166	110	89	84						
156.685.2232.088	SPD22 C32 4D 88L		32	22	176	116	93				88	SP..07T3	M2.5 6.33 3.5 48
156.685.2332.092	SPD23 C32 4D 92L	23		180	120	97	92						
156.685.2432.096	SPD24 C32 4D 96L	24		184	124	101	96						
156.685.2532.100	SPD25 C32 4D 100L	25		188	128	105	100						
156.685.2632.104	SPD26 C32 4D 104L	26		192	132	109	104						
156.685.2732.108	SPD27 C32 4D 108L	27		196	136	113	108						
156.685.2832.112	SPD28 C32 4D 112L	28		202	142	117	112						
156.685.2932.116	SPD29 C32 4D 116L	29		206	146	121	116						
156.685.3032.120	SPD30 C32 4D 120L	30		210	150	125	120						
156.685.3132.124	SPD31 C32 4D 124L	31		214	154	129	124						
156.685.3232.128	SPD32 C32 4D 128L	40	32	218	158	133	128	SP..1104	M4 9.35 5.65 60	T15			
156.685.3332.132	SPD33 C32 4D 132L		33	222	162	137	132						
156.685.3432.136	SPD34 C32 4D 136L		34	226	166	141	136						
156.685.3532.140	SPD35 C32 4D 140L		35	230	170	145	140						
156.685.3632.144	SPD36 C32 4D 144L		36	234	174	149	144						
156.685.3732.148	SPD37 C32 4D 148L		37	238	178	153	148						
156.685.3832.152	SPD38 C32 4D 152L		38	242	182	157	152						
156.685.3932.156	SPD39 C32 4D 156L		39	246	186	161	156						
156.685.4040.160	SPD40 C40 4D 160L		40	264	194	165	160				SP..1405	M5 12.8 7.0 60	T20
156.685.4140.164	SPD41 C40 4D 164L		41	268	198	169	164						
156.685.4240.168	SPD42 C40 4D 168L	42	272	202	173	168							
156.685.4340.172	SPD43 C40 4D 172L	43	276	206	177	172							
156.685.4440.176	SPD44 C40 4D 176L	44	280	210	181	176							
156.685.4540.180	SPD45 C40 4D 180L	45	284	214	185	180							
156.685.4640.184	SPD46 C40 4D 184L	46	288	218	189	184							
156.685.4740.188	SPD47 C40 4D 188L	47	292	222	193	188							
156.685.4840.192	SPD48 C40 4D 192L	48	296	226	197	192							
156.685.4940.196	SPD49 C40 4D 196L	49	300	230	201	196							
156.685.5040.200	SPD50 C40 4D 200L	50	304	234	205	200							

• Inserts are optional accessories. Needs to be purchased additionally.

## SPD 捨棄式快速鑽頭

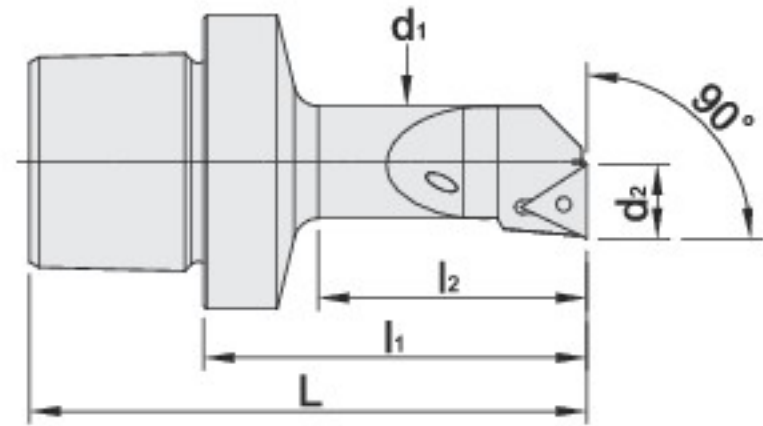
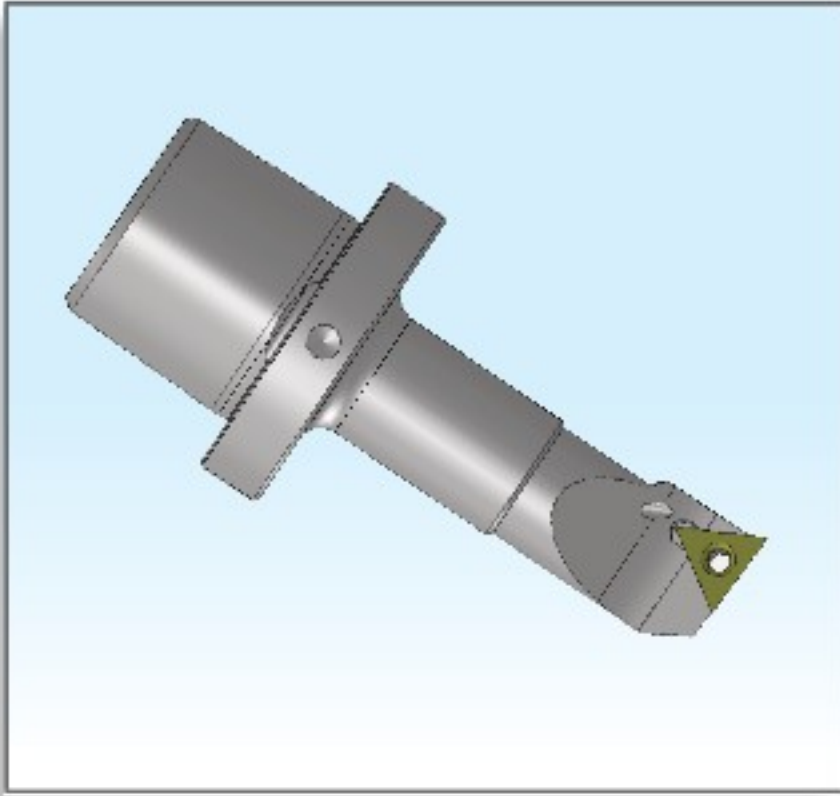


- Drilling depth is five times longer than the diameter of the High Speed Drill.
- The material is anti-vibration tool steel.
- The whole body is treated with fine grinding after hardening in order to raise the rigidity and stability and prevent from deformation.
- There is special coating on the surface of the high speed drill, which decreases the wear rate and extends the use life of the drill.

MODEL NO.	TYPE	D	d <sub>1</sub>	L	l <sub>1</sub>	l <sub>2</sub>	l <sub>3</sub>	INSERT	SCREW	WRENCH
156.685.1625.080	SPD16 C25 5D 80L	25	16	162	106	85	80	SP..0602	M2.2 5.2 3.1 60	T7
156.685.1725.085	SPD17 C25 5D 85L		17	167	111	90	85			
156.685.1825.090	SPD18 C25 5D 90L		18	172	116	95	90			
156.685.1925.095	SPD19 C25 5D 95L		19	177	121	100	95			
156.685.2025.100	SPD20 C25 5D 100L		20	182	126	105	100			
156.685.2125.105	SPD21 C25 5D 105L		21	187	131	110	105			
156.685.2232.110	SPD22 C32 5D 110L	32	22	198	138	115	110	SP..07T3	M2.5 6.33 3.5 48	T8
156.685.2332.115	SPD23 C32 5D 115L		23	203	143	120	115			
156.685.2432.120	SPD24 C32 5D 120L		24	208	148	125	120			
156.685.2532.125	SPD25 C32 5D 125L		25	213	153	130	125			
156.685.2632.130	SPD26 C32 5D 130L		26	218	158	135	130			
156.685.2732.135	SPD27 C32 5D 135L		27	223	163	140	135			
156.685.2832.140	SPD28 C32 5D 140L		28	230	170	145	140	SP..0904	M3.5 8.4 5.0 60	T10
156.685.2932.145	SPD29 C32 5D 145L		29	235	175	150	145			
156.685.3032.150	SPD30 C32 5D 150L		30	240	180	155	150			
156.685.3132.155	SPD31 C32 5D 155L		31	245	185	160	155			
156.685.3232.160	SPD32 C32 5D 160L		32	250	190	165	160			
156.685.3332.165	SPD33 C32 5D 165L		33	255	195	170	165			
156.685.3432.170	SPD34 C32 5D 170L	34	260	200	175	170	SP..1104	M4 9.35 5.65 60	T15	
156.685.3532.175	SPD35 C32 5D 175L	35	265	205	180	175				
156.685.3632.180	SPD36 C32 5D 180L	36	270	210	185	180				
156.685.3732.185	SPD37 C32 5D 185L	37	275	215	190	185				
156.685.3832.190	SPD38 C32 5D 190L	38	280	220	195	190				
156.685.3932.195	SPD39 C32 5D 195L	39	285	225	200	195				
156.685.4032.200	SPD40 C32 5D 200L	40	40	304	234	205	200			
156.685.4132.205	SPD41 C32 5D 205L		41	309	239	210	205			

• Inserts are optional accessories. Needs to be purchased additionally.

## PSL / STFC 內徑車刀架



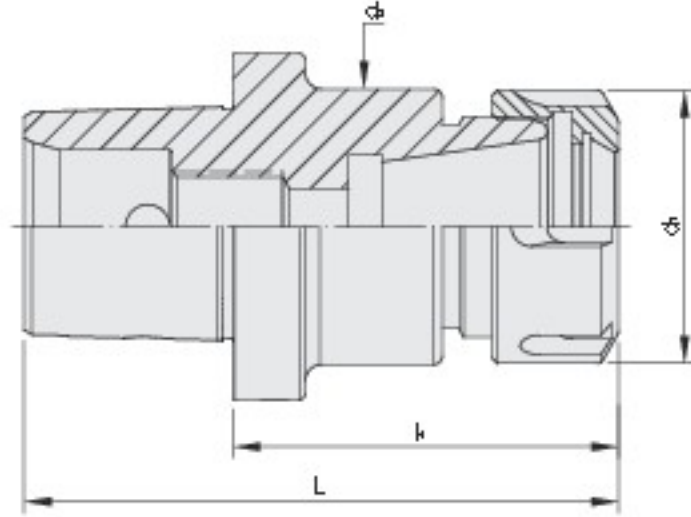
MODEL NO.	TYPE - $d_1$	L	$l_1$	$l_2$	$d_1$	$d_2$	INSERT
161.764.16R.060	PSL32 - STFCR16-D11	79	60	50	16	11	TP..1103
161.764.16L.060	PSL32 - STFCL16-D11						
161.764.20R.070	PSL32 - STFCR20-E 11	89	70	61	20	13	
161.764.20L.070	PSL32 - STFCL20-E 11						
161.764.25R.085	PSL32 - STFCR25-FX16	104	85	75	25	17	TP..1603
161.764.25L.085	PSL32 - STFCL25-FX16						
162.764.16R.060	PSL40 - STFCR16-D11	84	60	49	16	11	TP..1103
162.764.16L.060	PSL40 - STFCL16-D11						
162.764.20R.070	PSL40 - STFCR20-E 11	94	70	59	20	13	
162.764.20L.070	PSL40 - STFCL20-E 11						
162.764.25R.080	PSL40 - STFCR25-F 16	104	80	40	25	17	TP..1603
162.764.25L.080	PSL40 - STFCL25-F 16						
162.764.32R.100	PSL40 - STFCR32-H 16	124	100	91	32	22	
162.764.32L.100	PSL40 - STFCL32-H 16						

● Inserts are optional accessories. Needs to be purchased additionally.

● ACCESSORIES:

INSERT	SCREW	WRENCH
TP..1103	M3-8.0-4.0-43	T9
TP..1603	M4-10-5.0-43	T15

## PSL / ER 立銑刀夾頭



MODEL NO.	TYPE	L	l <sub>1</sub>	d <sub>1</sub>	d <sub>2</sub>	SIZE RANGE
161.122.16.040	PSL32 x ER16A - 40	69	40	28	-	φ 1.0 - φ 10
161.122.20.045	PSL32 x ER20A - 45	64	45	34	-	φ 2.0 - φ 13
161.122.25.050	PSL32 x ER25 - 50	69	50	42	-	φ 2.0 - φ 16
162.122.16.040	PSL40 x ER16A - 40	53.4	40	28	28	φ 1.0 - φ 10
162.122.20.045	PSL40 x ER20A - 45	69	45	34	34	φ 2.0 - φ 13
162.122.25.045	PSL40 x ER25 - 45	69		42	-	φ 2.0 - φ 16
162.122.32.054	PSL40 x ER32 - 54	78	54	50	-	φ 3.0 - φ 20

## ● STEEL SEALED COLLET

ER 斜槽止水筒夾



MODEL NO.	TYPE	WATER PRESSURE	SIZE RANGE
SYIC - 04543	ER16	70 kgf/cm <sup>2</sup>	φ 3 - φ 10
SYIC - 04544	ER20		φ 3 - φ 13
SYIC - 04545	ER25		φ 3 - φ 16
SYIC - 04546	ER32		φ 3 - φ 20
SYIC - 04547	ER40		φ 3 - φ 26



## ● ER COLLET

ER 彈性筒夾



MODEL NO.	TYPE	WATER PRESSURE	SIZE RANGE
SYIC - 04208	ER8	70 kgf/cm <sup>2</sup>	φ 1 - φ 5
SYIC - 04211	ER11		φ 1 - φ 7
SYIC - 04216	ER16		φ 1 - φ 10
SYIC - 04220	ER20		φ 2 - φ 13
SYIC - 04225	ER25		φ 2 - φ 16
SYIC - 04232	ER32		φ 3 - φ 20
SYIC - 04240	ER40		φ 3 - φ 26
SYIC - 04250	ER50		φ 6 - φ 34

## ● ER COLLET

ER 彈性筒夾



MODEL NO.	TYPE	WATER PRESSURE	SIZE RANGE
SYIC - 04311	ER11	70 kgf/cm <sup>2</sup>	φ 1 - φ 7
SYIC - 04316	ER16		φ 1 - φ 10
SYIC - 04320	ER20		φ 2 - φ 13
SYIC - 04325	ER25		φ 2 - φ 16
SYIC - 04332	ER32		φ 3 - φ 20
SYIC - 04340	ER40		φ 3 - φ 26

## ● ER SEALED COLLET

ER 止水筒夾



MODEL NO.	TYPE	WATER PRESSURE	SIZE RANGE
SYIC - 08316	ER16	70 kgf/cm <sup>2</sup>	φ 3 - φ 10
SYIC - 08320	ER20		φ 3 - φ 13
SYIC - 08325	ER25		φ 3 - φ 16
SYIC - 08332	ER32		φ 3 - φ 20
SYIC - 08340	ER40		φ 3 - φ 26



## ● ER COOLANT COLLET(FID TYPE)

ER-FID 出水筒夾



MODEL NO.	TYPE	WATER PRESSURE	SIZE RANGE
202.126.16	ER16 - FID	21 kgf/cm <sup>2</sup>	φ 3 - φ 7
202.126.20	ER20 - FID		φ 3 - φ 9
202.126.25	ER25 - FID		φ 3 - φ 14
202.126.32	ER32 - FID		φ 3 - φ 20
202.126.40	ER40 - FID		φ 3 - φ 26



## ● ER COOLANT COLLET(FOD TYPE)

ER-FOD 出水筒夾



MODEL NO.	TYPE	WATER PRESSURE	SIZE RANGE
202.127.16	ER16 - FOD	21 kgf/cm <sup>2</sup>	φ 3 - φ 7
202.127.20	ER20 - FOD		φ 4 - φ 9
202.127.25	ER25 - FOD		φ 3 - φ 14
202.127.32	ER32 - FOD		φ 3 - φ 20
202.127.40	ER40 - FOD		φ 4 - φ 26
202.127.50	ER50 - FOD		φ 6 - φ 34



## ● ER TCO RIGID TAP SEALED COLLET

ER 銅性攻牙止水筒夾



MODEL NO.	TYPE	WATER PRESSURE	CAPACITY
254.16	ER - TCO16	70 kgf/cm <sup>2</sup>	M5 - M10
254.20	ER - TCO20		M5 - M17
254.25	ER - TCO25		M5 - M22
254.32	ER - TCO32		M5 - M27
254.40	ER - TCO40		



## ● ER FLOATING TAP COLLET

ER 伸縮攻牙筒夾

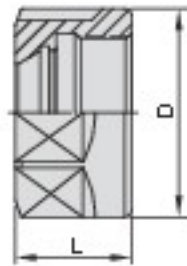


MODEL NO.	TYPE	PRESSURE	CAPACITY
SYIC - 05916	FT16	70 kgf/cm <sup>2</sup>	M5 - M10
SYIC - 05920	FT20		M5 - M17
SYIC - 05925	FT25		M5 - M22
SYIC - 05932	FT32		
SYIC - 05940	FT40		M5 - M27



## ● POWER GOOD ER CLAMPING NUT

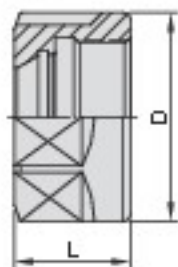
ER 包固得螺帽



MODEL NO.	TYPE	D	L
SYIC - 04501P	ER11 - A	19	11.3
SYIC - 04502P	ER16 - A	28	17.5
SYIC - 04503P	ER20 - A	34	19
SYIC - 04506P	ER16 - UM/RD	31.7	18
SYIC - 04507P	ER20 - UM/RD	35	19.5
SYIC - 04508P	ER25 - UM/RD	42	20
SYIC - 04509P	ER32 - UM/RD	50	22.5
SYIC - 04510P	ER40 - UM/RD	63	25.5
SYIC - 04511P	ER50 - UM/RD	78	35.5
SYIC - 04524P	ER11 - M	16	11.3
SYIC - 04525P	ER16 - M	22	18
SYIC - 04526P	ER20 - M	28	19

## ● HIGH SPEED POWER GOOD NUT

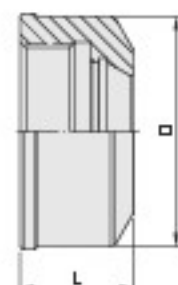
ER 高速型包固得螺帽



MODEL NO.	TYPE	D	L
SYIC - 08652P	ER11 - HS	19	11.3
SYIC - 08654P	ER16 - HS	18	17.5
SYIC - 08656P	ER20 - HS	34	19
SYIC - 08655P	ER16 - HS	32	18
SYIC - 08657P	ER20 - HS	35	19.5
SYIC - 08658P	ER25 - HS	42	20
SYIC - 08660P	ER32 - HS	50	22.5
SYIC - 08662P	ER40 - HS	63	25.5

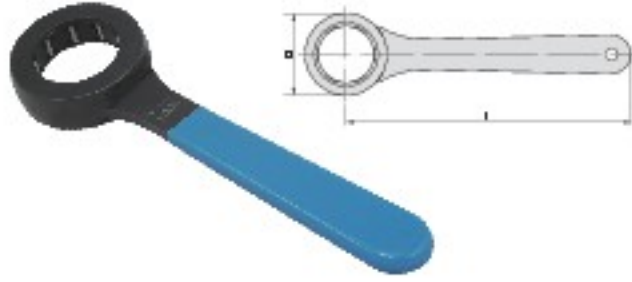
## ● ER NON WIND RESISTANCE NUT

ER 無風阻螺帽



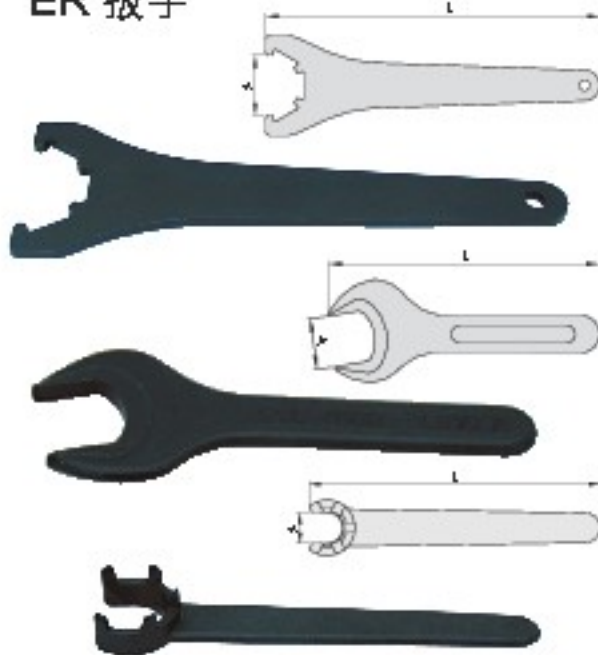
MODEL NO.	TYPE	D	L
206.130.16	ER16	30	17.5
206.130.20	ER20	34	19
206.130.25	ER25	42	20
206.130.32	ER32	50	22.5

## ● ER TORQUE WRENCH ER 單向扳手



MODEL NO.	TYPE	D	L
286.129.11	ER11 W-RDQ	φ43	119.85
286.129.16	ER16 W-RDQ	φ55	169.85
286.129.20	ER20 W-RDQ / SKS13 W-RDQ	φ59	172.1
286.129.25	ER25 W-RDQ	φ67	175.85
286.129.32	ER32 W-RDQ	φ75	180

## ● ER SPANNER (WRENCH) ER 扳手



MODEL NO.	TYPE	L	A
SYIC - 04615	ER25 UM/RD	206	37
SYIC - 04616	ER32 UM/RD	253	46.5
SYIC - 04617	ER40 UM/RD	289	58
SYIC - 05618	ER50 UM/RD	351	74

MODEL NO.	TYPE	L	A
SYIC - 04608	ER11 - A	120	17
SYIC - 04609	ER16 - A	140	25
SYIC - 04610	ER20 - A	160	30
SYIC - 04621	ER11 - M	95	11.5
SYIC - 04622	ER16 - M	117	15
SYIC - 04623	ER20 - M	129	19.5

## ● NUT ADAPTERS FOR EXCHANGEABLE TORQUE WRENCH 螺帽轉接頭(扭力扳手用)



MODEL NO.	TYPE	D	L
SYIC - 04582	ER16	53	79
SYIC - 04584	ER20	60	75
SYIC - 04586	ER25	65	72
SYIC - 04588	ER32	75	72
SYIC - 04590	ER40	90	85

MODEL NO.	TYPE	D	L
287.128.11	ER11 W-TDQ	43	73.35
287.128.16	ER16 W-TDQ	55	95.35
287.128.20	ER20 W-TDQ / SKS13 -TDQ	59	89.6
287.128.25	ER25 W-TDQ	67	97.35
287.128.32	ER32 W-TDQ	75	105.5

## ● SPIGOT INTERCHANGEABLE DIGITAL TORQUE WRENCH 數顯LCD扭力扳手



MODEL NO.	TYPE	RANGE	
SYIC - 04575 - 135	DG - 135	10 - 135 N.m	7.4 - 99.6 ft/lbs
SYIC - 04575 - 200	DG - 200	20 - 200 N.m	14.8 - 147 ft/lbs
SYIC - 04575 - 340	DG - 340	34 - 340 N.m	25 - 250.9 ft/lbs
SYIC - 283.DG252	DG - 252	10 - 135 N.m	7.4 - 99.6 ft/lbs
SYIC - 283.DG253	DG - 253	20 - 200 N.m	14.8 - 147 ft/lbs
SYIC - 283.DG254	DG - 254	34 - 340 N.m	25 - 250.9 ft/lbs
SYIC - 283.DG264	DG - 264	10 - 135 N.m	7.4 - 99.6 ft/lbs
SYIC - 283.DG265	DG - 265	20 - 200 N.m	14.8 - 147 ft/lbs
SYIC - 283.DG266	DG - 266	34 - 340 N.m	25 - 250.9 ft/lbs
SYIC - 283.DG271	DG - 271	10 - 135 N.m	7.4 - 99.6 ft/lbs
SYIC - 283.DG272	DG - 272	20 - 200 N.m	14.8 - 147 ft/lbs
SYIC - 283.DG273	DG - 273	34 - 340 N.m	25 - 250.9 ft/lbs



## AL 車床套筒



Fig1.

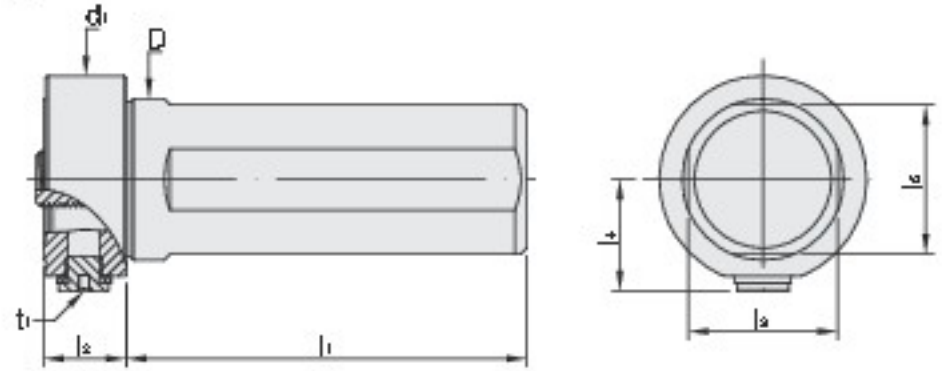
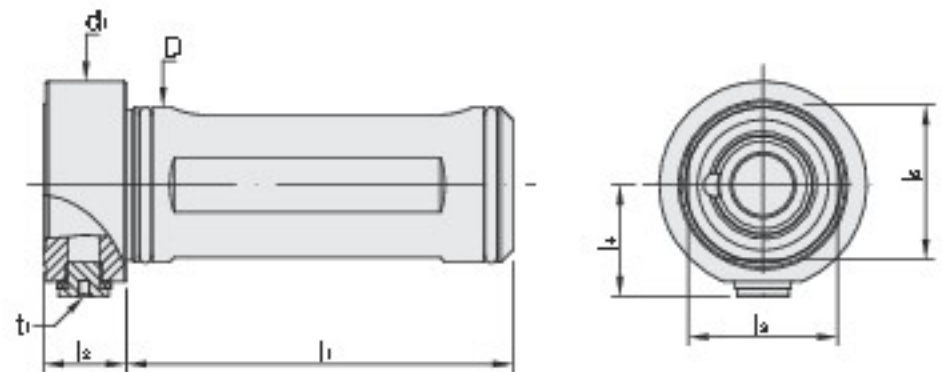


Fig2.



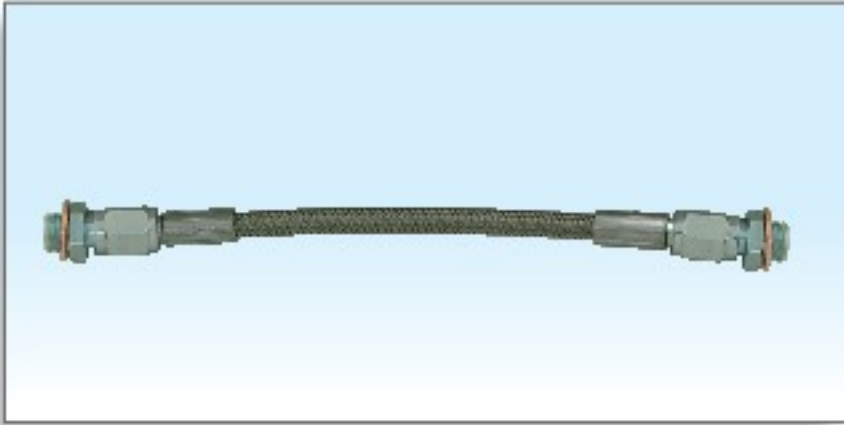
- Used for lathe.
- Quick change design.
- Modular system: internal hole 25 32 40 50.
- Fig1 needs to be connected with high-pressure coolant pipe: through-center coolant 70BAR.
- Fig2 doesn't need to be connected with high-pressure coolant pipe: internal coolant supply 70BAR.

MODEL NO.	TYPE	l <sub>1</sub>	l <sub>2</sub>	l <sub>3</sub>	l <sub>4</sub>	l <sub>5</sub>	D	d <sub>1</sub>	T <sub>1</sub>	Fig.	APPLICABLE MACHINE
161.C25.073	AL3 x C25 - 73	73	25	23	26	23	25	45.5	PF 1/8	1	-
161.C32.080	AL3 x C32 - 80	80	18	30	26	30	32	45.5		1	-
161.C32.080A	AL3 x C32 - 80-A	80	18	30	26	31	32	45.5		2	OR
161.C40.100	AL3 x C40 - 100	100	18	37	26	37	40	45.5		1	-
162.C40.100	AL4 x C40 - 100	100	20	37	28	37	40	51.5		1	-
162.C40.100A	AL4 x C40 - 100-A	99.5	20.5	37	28	38.5	40	51.5		2	OR
162.C40.100B	AL4 x C40 - 100-B	99.5	20.5	37	28	38.5	40	51.5		2	YIPC
163.C50.120	AL5 x C50 - 120	120	24	14	33	14	50	61.5		1	-

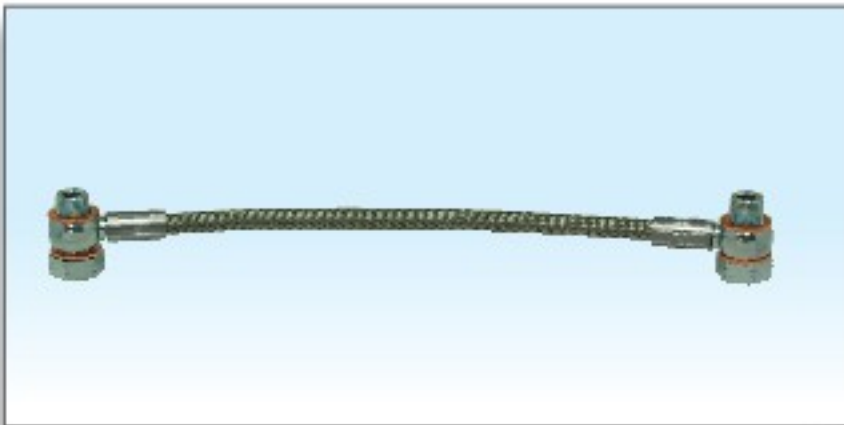
• WRENCH:

	MODEL NO.	TYPE	L	I
	B11 - A - 10T10X200 - B	T10 - 200	200	10

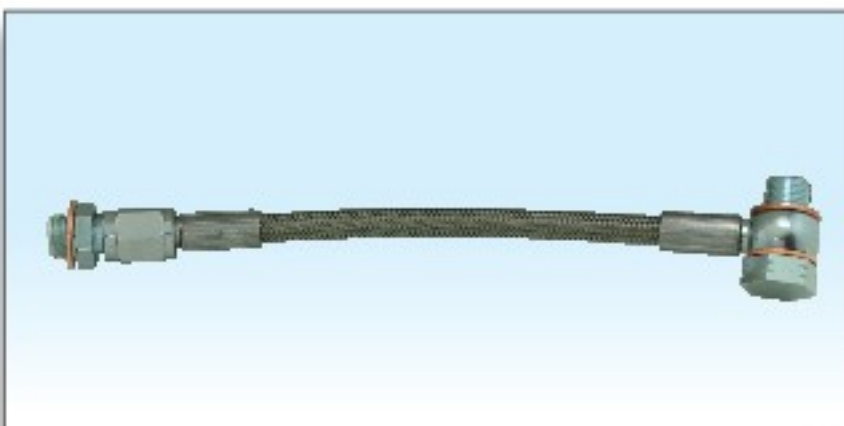
## PSL 高壓水管



MODEL NO.	TYPE	LENGTH	MAX. WATER PRESSURE
310.A.150	HOSE - A - 150	150	80 bar
310.A.200	HOSE - A - 200	200	

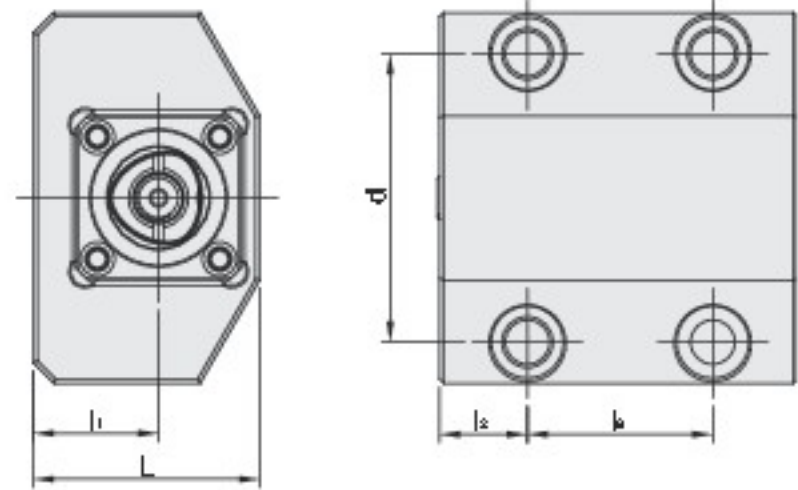
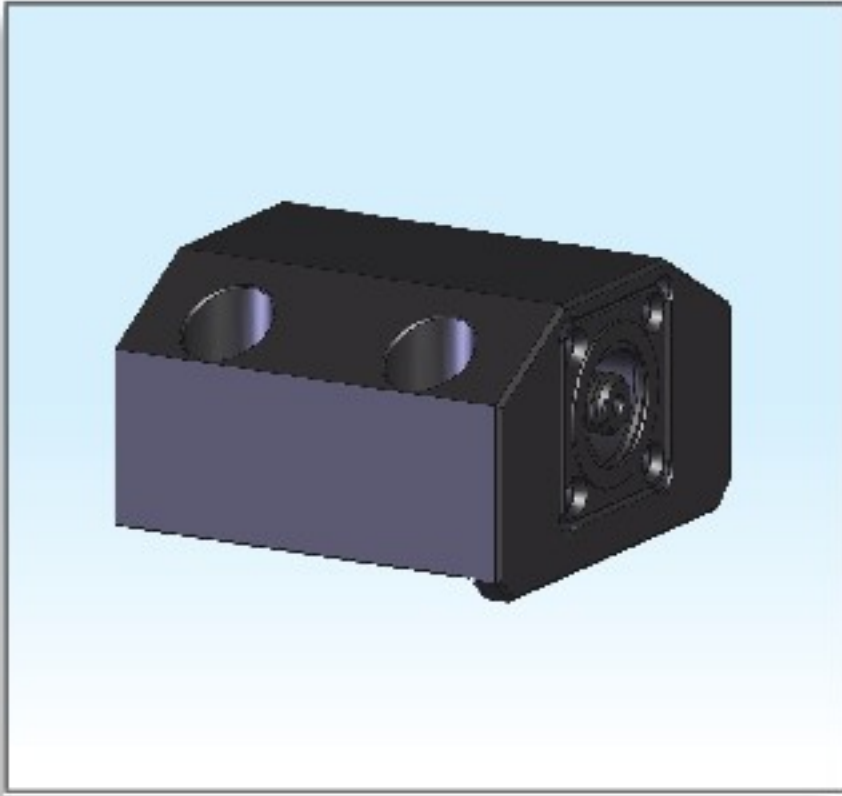


MODEL NO.	TYPE	LENGTH	MAX. WATER PRESSURE
310.B.150	HOSE - B - 150	150	80 bar
310.B.200	HOSE - B - 200	200	

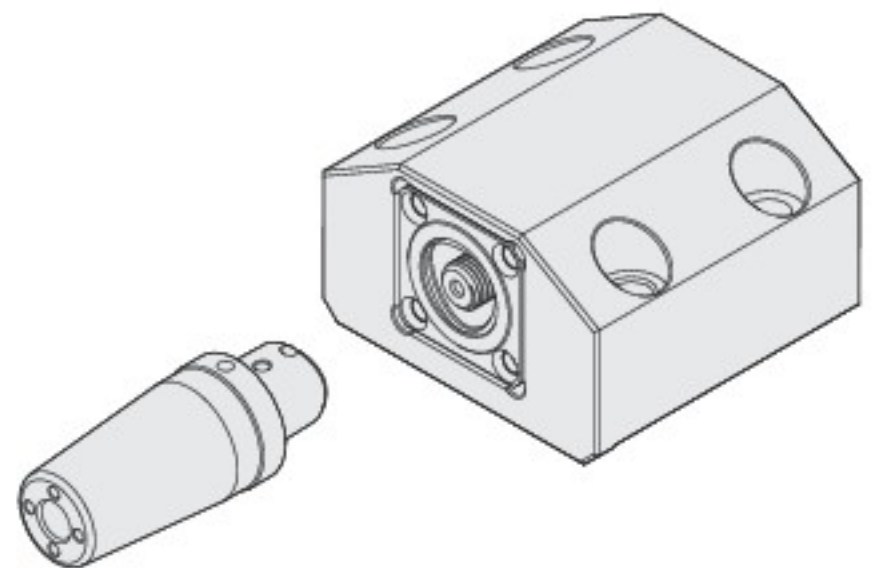


MODEL NO.	TYPE	LENGTH	MAX. WATER PRESSURE
310.C.150	HOSE - C - 150	150	80 bar
310.C.200	HOSE - C - 200	200	

## AL / HAAS 整組式刀座



- One-piece structure with tool post and AL adapter, with high rigidity and great convenience.
- Quick change design.
- Needn't be connected with high-pressure coolant pipe: internal coolant supply 70BAR.



MODEL NO.	TYPE	APPLICABLE TYPE	L	l <sub>1</sub>	l <sub>2</sub>	l <sub>3</sub>	d
305.C3	HAAS - PSC32	PSC32	86.3	30.4	20	45	70



**心源工業股份有限公司**  
**SHIN-YAIN INDUSTRIAL CO., LTD.**  
**興源機械工業有限公司**  
**SHINTEK MACHINERY CO., LTD.**

43644 台中市清水區菁埔路198號

NO.198, CHING PU ROAD, CHING SHUI DIST.,  
TAICHUNG CITY, 436, TAIWAN.

TEL:(04)26237575 (6線)

FAX:886-4-26237676 . 2622SYIC

<http://www.syic.com.tw>

E-mail:sales@syic.com.tw



AGENT :