



POWER GOOD ER CLAMPING NUT

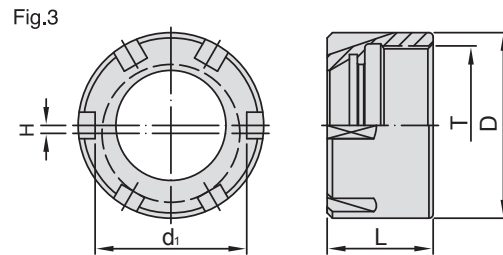
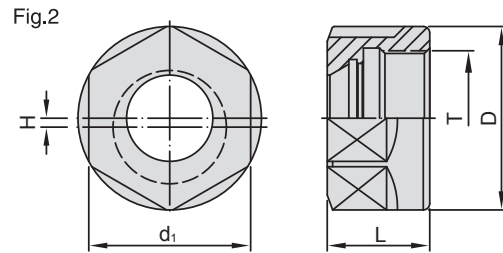
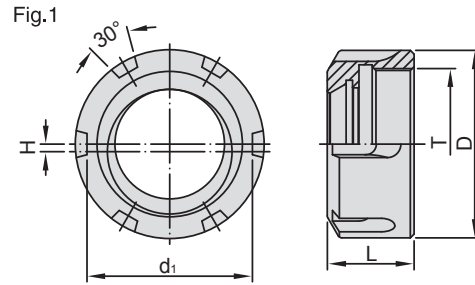
SYIC-04500P

ER 包固得螺帽



T W PAT NO. M298033
 T W PAT NO. M311791
 J P PAT NO. 3128766
 K R PAT NO. 20-0433603
 C N PAT NO. ZL200620132661.0
 C H PAT NO. 696550

- Special surface treatment. Clamping power is increased twice.
- Suitable for SYIC-04210 ER Collet.
- Pre-balance to G6.3 10,000rpm.



MODEL NO.	TYPE	D	d ₁	H	L	T	Fig	WEIGHT (KGS)
SYIC - 04501P	ER11 - A	19	17	1	11.3	M14 x 0.75P	2	0.020
SYIC - 04502P	ER16 - A	28	25	1.65	17.5	M22 x 1.5P		0.050
SYIC - 04503P	ER20 - A	34	30	1.65	19	M25 x 1.5P		0.100
SYIC - 04506P	ER16 - UM-RD	31.7	26	1.65	18	M22 x 1.5P	1	0.050
SYIC - 04507P	ER20 - UM-RD	35	29	1.65	19.5	M25 x 1.5P		0.100
SYIC - 04508P	ER25 - UM-RD	42	36	1.85	20	M32 x 1.5P		0.140
SYIC - 04509P	ER32 - UM-RD	50	44	2	22.5	M40 x 1.5P		0.200
SYIC - 04510P	ER40 - UM-RD	63	57	2.4	25.5	M50 x 1.5P		0.300
SYIC - 04511P	ER50 - UM-RD	78	71	2.5	35.5	M64 x 2.0P		0.500
SYIC - 04523P	ER8 - M	12	10	0.6	10.8	M10 x 0.75P	3	0.005
SYIC - 04524P	ER11 - M	16	12	0.6	11.3	M13 x 0.75P		0.010
SYIC - 04525P	ER16 - M	22	17.2	1	18	M19 x 1.0P		0.050
SYIC - 04526P	ER20 - M	28	22.5	1.45	19	M24 x 1.0P		0.050
SYIC - 04527P	ER25 - M	35	28.6	1.5	20	M30 x 1.0P		0.080



ER HIGH SPEED PRECISION NUT

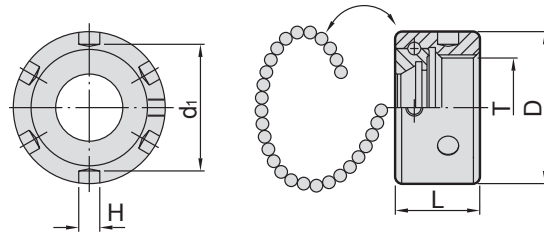
BALL BEARING TYPE

SYIC-08680P

ER 強力精密高速型螺帽



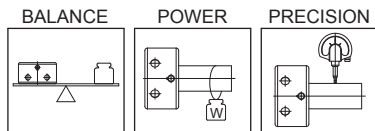
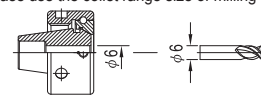
T W PAT NO. 186381



- Steel: SNCM - 21 • HRC: 52°
- Applied for SYIC-04600 ER spanner.
- The external diameter is ground precisely, decreasing unbalance.
- Balanced to G2.5 15,000 rpm.
- According to ISO1941-1 standard, examined by a balancing machine.
- Can be ordered separately.

- Higher precision and stability if matching ER Collet-UP class.
- When using the nut, the size of collet with milling cutter should be the same.

Please use the collet range size of milling tools.



MODEL NO.	TYPE	D	d ₁	H	L	T	WEIGHT (KGS)
SYIC - 08680P	ER 16 - HSP	32	26	5	18	M22 x 1.5P	0.008
SYIC - 08681P	ER 20 - HSP	36	30		20	M25 x 1.5P	0.100
SYIC - 08682P	ER 25 - HSP	42	36	4.4	22.5	M32 x 1.5P	0.100
SYIC - 08684P	ER 32 - HSP	50	44		25	M40 x 1.5P	0.150
SYIC - 08686P	ER 40 - HSP	63	57		27.5	M50 x 1.5P	0.270



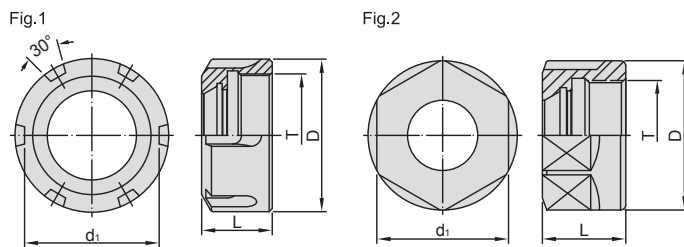
HIGH SPEED POWER GOOD NUT

SYIC-08650P

ER 高速型包固得螺帽



T W PAT NO. M298033
T W PAT NO. M311791
J P PAT NO. 3128766
K R PAT NO. 20-0433603
C H PAT NO. 696550
C N PAT NO. ZL200620132661.0



- Special surface treatment. Clamping power is improved twice.
- Suitable for ER Collets.
- Pre-balanced to G2.5 15,000 rpm.

MODEL NO.	TYPE	D	d ₁	L	T	Fig	WEIGHT (KGS)
SYIC - 08652P	ER11 - HS	19	17	11.3	M14 x 0.75P	2	0.02
SYIC - 08654P	ER16 - HS	18	25	17.5	M22 x 1.5P		0.05
SYIC - 08655P	ER16 - HS	32	26	18	M22 x 1.5P	1	0.06
SYIC - 08656P	ER20 - HS	34	30	19	M25 x 1.5P		0.10
SYIC - 08657P	ER20 - HS	35	29.5	19.5	M25 x 1.5P	1	0.11
SYIC - 08658P	ER25 - HS	42	36	20	M32 x 1.5P		0.14
SYIC - 08660P	ER32 - HS	50	44	22.5	M40 x 1.5P		0.20
SYIC - 08662P	ER40 - HS	63	27	25.5	M50 x 1.5P		0.30



MLD COOLANT NUT

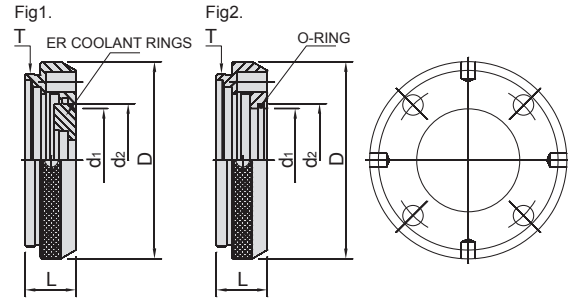
With coolant hole

B
T

SYIC-19480

MLD 給水螺帽

C
A
T



• Used for general cutting tools.

D
A
T

MODEL NO.	TYPE	L	D	d ₁	d ₂	T	RANGE	Fig	WEIGHT (KGS)
SYIC - 19482	MLD20	14	43	19.1	21	M36 x 0.5P	φ 3 ~ φ 16	1	0.28
				20	24.6		φ 20	2	
SYIC - 19483	MLD25	14	51	24	27	M42 x 0.5P	φ 3 ~ φ 20	1	0.29
				25	28		φ 25	2	
SYIC - 19484	MLD32	15	58	30.5	33.4	M51 x 0.5P	φ 3 ~ φ 26	1	0.29
				32	39		φ 32	2	
SYIC - 19486	MLD3/4"	14	43	19.1	21	M36 x 0.5P	φ 1/8" ~ φ 5/8"	1	0.28
				19.05	22.05		φ 3/4"	2	
SYIC - 19487	MLD1"	14	51	24	27	M42 x 0.5P	φ 1/8" ~ φ 3/4"	1	0.29
				25.4	28.4		φ 1"	2	
SYIC - 19488	MLD1-1/4"	15	58	30.5	33.4	M51 x 0.5P	φ 1/8" ~ φ 1"	1	0.29
				31.75	38.75		φ 1-1/4"	2	

H
S
K

N
T
&
M
T



MLD COOLANT NUT

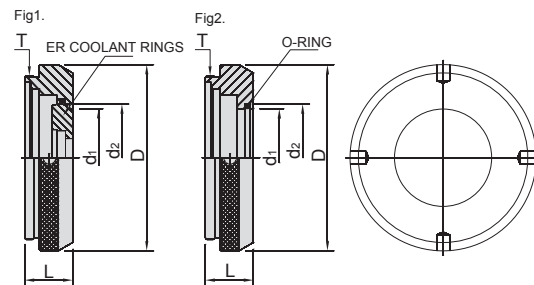
W/O coolant hole

I
S
O

SYIC-19490

MLD 止水螺帽

B
O
R
I
N
G



• Used for cutting tools with a coolant hole.

S
H
R
I
N
K
F
I
T

A
C
C
E
S
S
O
R
I
E
S

MODEL NO.	TYPE	L	D	d ₁	d ₂	T	RANGE	Fig	WEIGHT (KGS)
SYIC - 19492	MLD20	14	43	19.1	21	M36 x 0.5P	φ 3 ~ φ 16	1	0.28
				20	24.6		φ 20	2	
SYIC - 19493	MLD25	14	51	24	27	M42 x 0.5P	φ 3 ~ φ 20	1	0.29
				25	28		φ 25	2	
SYIC - 19494	MLD32	15	58	30.5	33.4	M51 x 0.5P	φ 3 ~ φ 26	1	0.29
				32	39		φ 32	2	
SYIC - 19496	MLD3/4"	14	43	19.1	21	M36 x 0.5P	φ 1/8" ~ φ 5/8"	1	0.28
				19.05	22.05		φ 3/4"	2	
SYIC - 19497	MLD1"	14	51	24	27	M42 x 0.5P	φ 1/8" ~ φ 3/4"	1	0.29
				25.4	28.4		φ 1"	2	
SYIC - 19498	MLD1-1/4"	15	58	30.5	33.4	M51 x 0.5P	φ 1/8" ~ φ 1"	1	0.29
				31.75	38.75		φ 1-1/4"	2	

K
I
T

T
E
C
H
N
I
C
A
L
I
N
F
O

B
T



POWER GOOD EOC CLAMPING NUT

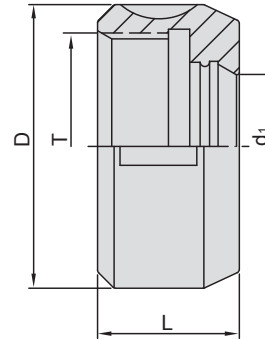
C
A
T

SYIC-83630P

EOC 包固得栓緊螺帽



T W PAT NO. M298033
T W PAT NO. M311791
J P PAT NO. 3128766
K R PAT NO. 20-0433603
C H PAT NO. 696550
C N PAT NO. ZL200620132661.0



D
A
T

H
S
K

- Special surface treatment. Clamping power is improved twice.
- Thread with high precision ground. Easy to lock with a body.

N
T
&
M
T

MODEL NO.	TYPE	D	d ₁	L	T	WEIGHT (KGS)
SYIC - 83638P	EOC25	60	29.7	30	M48 x 2.0P	0.30
SYIC - 83639P	EOC32	72	38.5	33.5	M60 x 2.5P	0.48

I
S
O

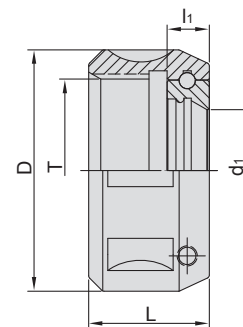


CLAMPING NUT

B
O
R
I
N
G

SYIC-83630

EOC 栓緊螺帽



S
H
R
I
N
K
F
I
T

A
C
C
E
S
S
O
R
I
E
S

- Clamping side with bearing device.
- Bearing ring turning smoothly, without clearance, and increase clamping power.
- Thread with high precision ground. Easy to lock with a body.

K
I
T

MODEL NO.	TYPE	D	d ₁	L	l ₁	T	WEIGHT (KGS)
SYIC - 83638	EOC25	60	29.7	30	10.5	M48 x 2.0P	0.30
SYIC - 83639	EOC32	72	38.5	33.5	10.5	M60 x 2.5P	0.48

T
E
C
H
N
I
C
A
L
I
N
F
O.



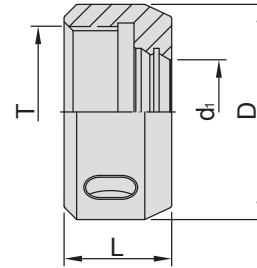
POWER GOOD TG CLAMPING NUT

SYIC-84012P

TG 包固得栓緊螺帽



T W PAT NO. M298033
 T W PAT NO. M311791
 J P PAT NO. 3128766
 K R PAT NO. 20-0433603
 C H PAT NO. 696550
 C N PAT NO. ZL200620132661.0



- Special surface treatment. Clamping power is improved twice.
- Square thread is good for clamping capacity.

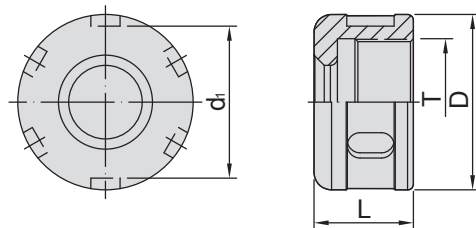
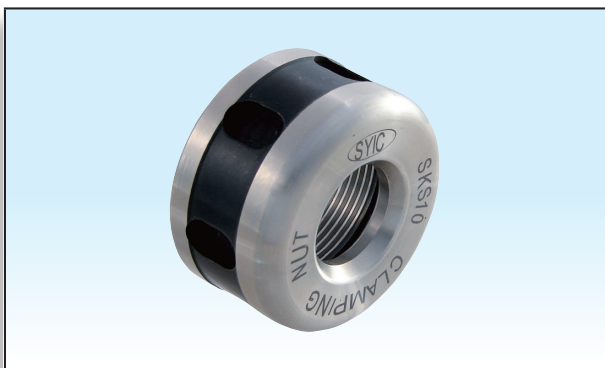
MODEL NO.	TYPE	D	d ₁	L	T	WEIGHT (KGS)
SYIC - 84012P	TG75	50	22.7	25	TW 1-1/2" - 12	0.15
SYIC - 84014P	TG100	60	29.1	30	TW 1-7/8" - 12	0.30
SYIC - 84016P	TG150	82	42.4	35	TW 2-5/8" - 12	0.50



SKS CLAMPING NUT

SYIC-18310

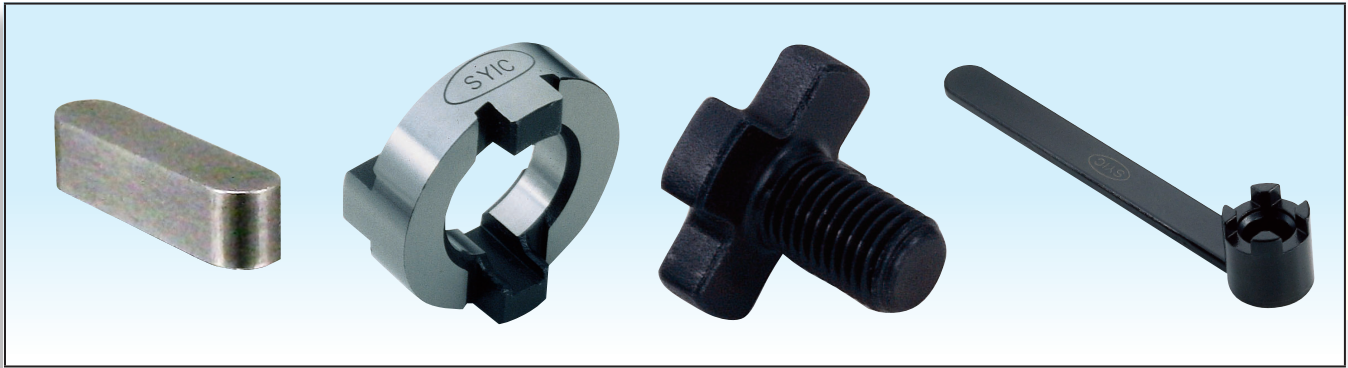
SKS 高速機專用螺帽



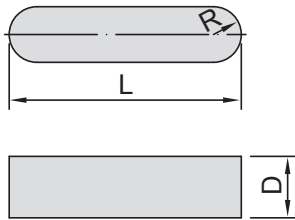
MODEL NO.	TYPE	L	D	d ₁	T	WEIGHT (KGS)
SYIC - 18312	SKS6	15	18	-	M14 x 1.0P	0.02
SYIC - 18313	SKS6 KM					0.02
SYIC - 18314	SKS10	17	30	26	M21.5 x 1.0P	0.04
SYIC - 18315	SKS10 KM					0.04
SYIC - 18316	SKS16	24.5	40	35.8	M32 x 1.5P	0.06
SYIC - 18317	SKS16 KM					0.06
SYIC - 18320	SKS25	30.5	55.1	50	M45 x 1.5P	1.00
SYIC - 18321	SKS25 KM					1.00

SYIC-42830

連結式銑刀柄零件

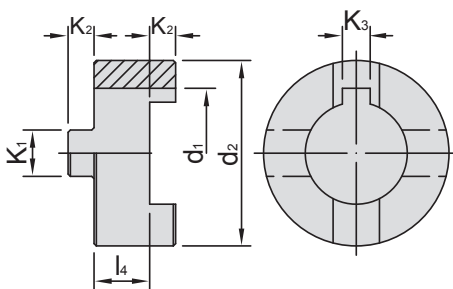


- Steel: SCM - 4
- Can purchase removable ring, nut & spanner separately.



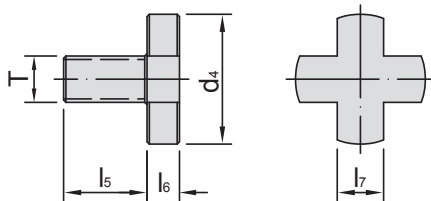
SYIC - 42830 KEY

MODEL NO.	TYPE	L	D	R	WEIGHT (KGS)
SYIC - 42831	KEY - 16	20	4	4	0.002
SYIC - 42832	KEY - 22	25	6	3	0.003
SYIC - 42833	KEY - 27	25	7	3.5	0.004
SYIC - 42834	KEY - 32	28	7	4	0.006
SYIC - 42835	KEY - 40	32	8	5	0.008
SYIC - 42836	KEY - 50	36	8	6	0.009



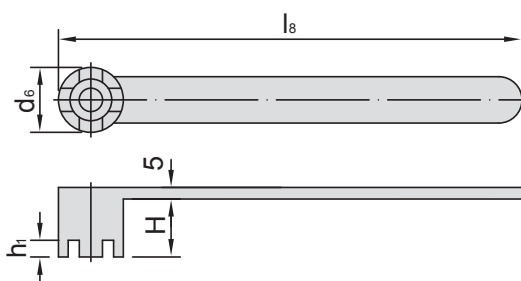
SYIC - 42840 REMOVABLE RING

MODEL NO.	TYPE - d ₁	d ₂	k ₁	k ₂	k ₃	l ₄	WEIGHT (KGS)
SYIC - 42841	CORE - 16	32	8	5	4	10	0.009
SYIC - 42843	CORE - 22	40	10	5.6	6	12	0.010
SYIC - 42845	CORE - 27	48	12	6.3	7	12	0.020
SYIC - 42847	CORE - 32	58	14	7	8	14	0.030
SYIC - 42849	CORE - 40	70	16	8	10	14	0.040
SYIC - 42851	CORE - 50	90	18	9	12	16	0.050



SYIC - 42860 NUT

MODEL NO.	TYPE	d ₄	l ₅	l ₆	l ₇	T	WEIGHT (KGS)
SYIC - 42861	CONU - 16	20	16	6	8	M8 x 1.25P	0.07
SYIC - 42863	CONU - 22	28	18	7	10	M10 x 1.5P	0.08
SYIC - 42865	CONU - 27	35	22	8	12	M12 x 1.75P	0.10
SYIC - 42867	CONU - 32	42	26	9	16	M16 x 2.0P	0.20
SYIC - 42869	CONU - 40	52	30	10	20	M20 x 2.5P	0.25
SYIC - 42871	CONU - 50	63	36	12	24	M24 x 3.0P	0.30



SYIC - 42880 SPANNER

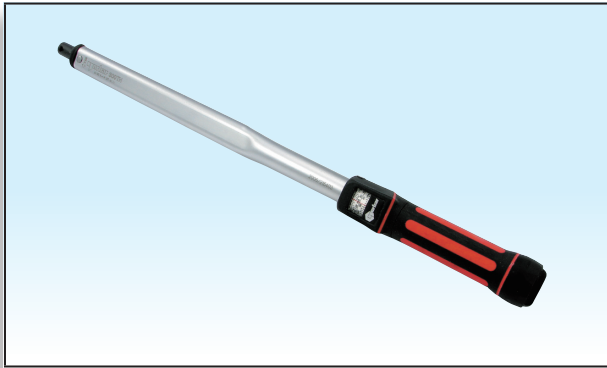
MODEL NO.	TYPE	d ₆	l ₈	H	h ₁	WEIGHT (KGS)
SYIC - 42881	COSP - 16	22	180	20	6.2	0.30
SYIC - 42883	COSP - 22	28	200	25	7.2	0.40
SYIC - 42885	COSP - 27	35	225	32	8.5	0.50
SYIC - 42887	COSP - 32	42	250	36	9.5	0.65
SYIC - 42889	COSP - 40	52	280	40	11	0.85
SYIC - 42891	COSP - 50	63	315	45	12	0.95



EXCHANGEABLE TORQUE WRENCH

SYIC-04570

替換式扭力扳手



No using adjustable spanner!



No using ER spanner with steel tube!



No using adjustable spanner with steel tube!



Unsuitable usage of spanner will make nut break easily.

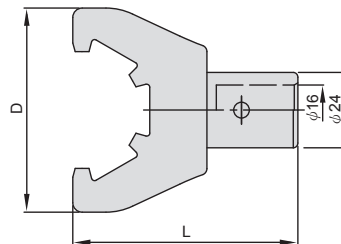
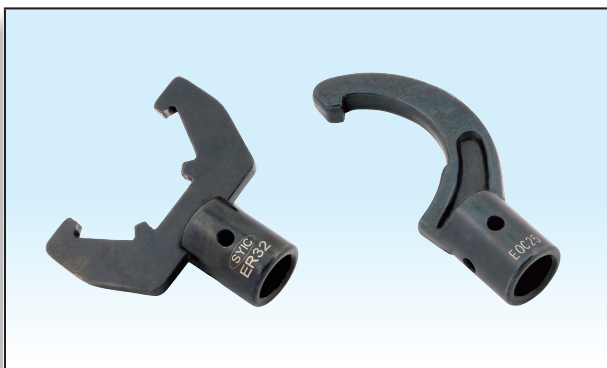
MODEL NO.	TYPE	RANGE		WEIGHT (KGS)
SYIC - 04572	200 TH	40 - 200 N.m	30 - 150 ft/lbs	0.74
SYIC - 04574	300 TH	60 - 300 N.m	44 - 220 ft/lbs	0.74



NUT ADAPTERS FOR EXCHANGEABLE TORQUE WRENCH

SYIC-04580

螺帽轉接頭(扭力扳手用)



- Please use it with SYIC-04570.
- Set standard for nut clamping torque, please see the type as below for your reference.
- Due to setting power in advance, it can prevent tool dropping when processing. Not easy to loosen for tightness and make the collets elastic fatigue.

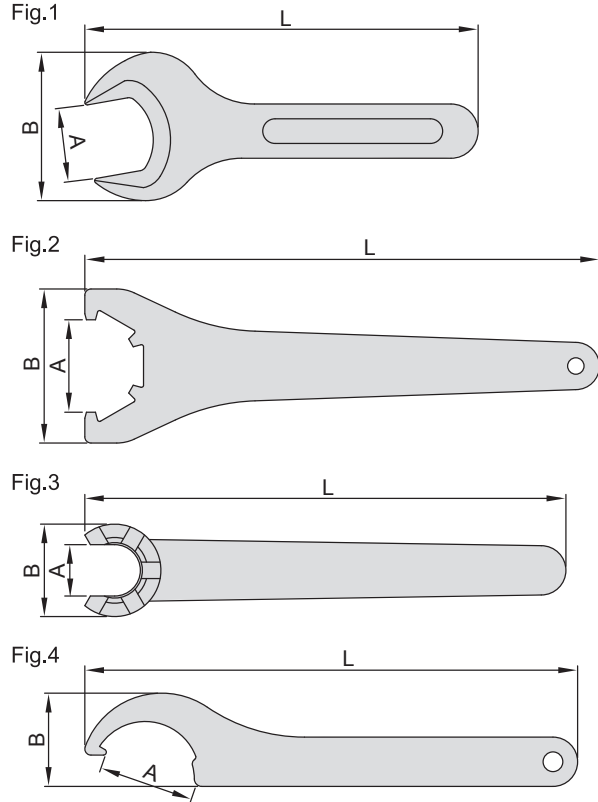
MODEL NO.	TYPE	NUT SIZE	D	L	Max.TORQUE		WEIGHT (KGS)
SYIC - 04582	ER16	ER16 - A	53	79	68 N.m	50 ft/lbs	0.14
SYIC - 04584	ER20	ER20 - A	60	75	102 N.m	75 ft/lbs	0.20
SYIC - 04586	ER25	ER25 UM.KM/RD	65	72	129 N.m	95 ft/lbs	0.25
SYIC - 04588	ER32	ER32 UM.KM/RD	75	72	170 N.m	125 ft/lbs	0.30
SYIC - 04590	ER40	ER40 UM.KM/RD	90	85	217 N.m	160 ft/lbs	0.40
SYIC - 04592	EOC25	EOC25	46	107	280 N.m	206 ft/lbs	0.30
SYIC - 04597 - 6	SKS6	SKS6	34	120	70 N.m	52 ft/lbs	0.08
SYIC - 04597 - 10	SKS10	SKS10	27	191	20 N.m	15 ft/lbs	0.16
SYIC - 04597 - 16	SKS16	SKS16	31	217	55 N.m	40 ft/lbs	0.18
SYIC - 04597 - 25	SKS25	SKS25	33	230	80 N.m	60 ft/lbs	0.20

SYIC-04600



- Steel: SCM - 4.
- UM/RD is compatible.
- The spanner can be purchased separately.
- ER collet chuck doesn't include a spanner.

ER 扳手



No using adjustable spanner!



No using ER spanner with steel tube!



No using adjustable spanner with steel tube!



Unsuitable usage of spanner will make nut break easily.

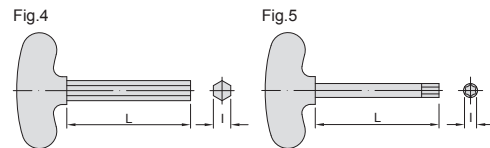
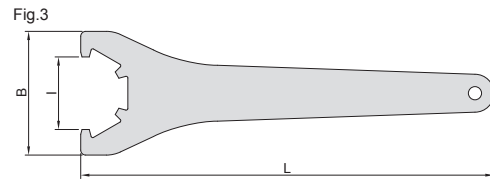
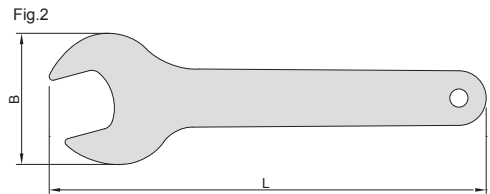
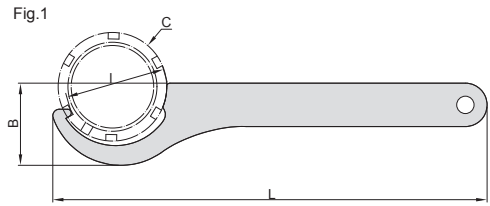
MODEL NO.	TYPE	NUT DIA	L	B	A	Max.TORQUE	Fig	WEIGHT (KGS)
SYIC - 04608	ER11 - A	19	120	40	17	20 ft/lbs	1	0.10
SYIC - 04609	ER16 - A	28	140	53	25	50 ft/lbs		0.15
SYIC - 04610	ER20 - A	34	160	60	30	75 ft/lbs		0.20
SYIC - 04615	ER25 UM/RD	42	206	65	37	95 ft/lbs	2	0.22
SYIC - 04616	ER32 UM/RD	50	253	75	46.5	125 ft/lbs		0.30
SYIC - 04617	ER40 UM/RD	63	289	90	58	140 ft/lbs		0.50
SYIC - 05618	ER50 UM/RD	78	351	110	74	160 ft/lbs		0.90
SYIC - 04620	ER8 - M	12	75	13	8	7 ft/lbs	3	0.05
SYIC - 04621	ER11 - M	16	95	17	11.5	14 ft/lbs		0.04
SYIC - 04622	ER16 - M	22	117	22.5	15	22 ft/lbs		0.06
SYIC - 04623	ER20 - M	28	129	28.5	19.5	25 ft/lbs		0.07
SYIC - 04624	ER25 - M	19	143	36	25	29 ft/lbs		0.09
SYIC - 04642	ER16 - HSP	32	150	28.622	28	50 ft/lbs	4	0.15
SYIC - 04644	ER20 - HSP	36	150	28.622	32	75 ft/lbs		0.20
SYIC - 04645	ER25 - HSP	42	200	37.83	38	95 ft/lbs		0.22
SYIC - 04646	ER32 - HSP	50	200	37.83	45	125 ft/lbs		0.30

SYIC-83690



• Can order spanner separately.

扳手



MODEL NO.	TYPE	L	B	C	I	Fig	WEIGHT (KGS)	
SYIC - 82170	SPU - 8	155	26	36	31	1	0.06	
SYIC - 82171	SPU - 10		27.5	43	35		0.06	
SYIC - 82172	SPU - 13	170	37.5	48	46		0.08	
SYIC - 82173	SPU - 16		40	54	49.5		0.08	
SYIC - 83691	EOC - 25	260	46	60	52		0.30	
SYIC - 84191	MLC - 42	285	65	90	90		0.37	
SYIC - 84192	MLC - 20	260	46	56.5	52		0.30	
SYIC - 84193	MLC - 32、EOC - 32	272	64	72	67		0.45	
SYIC - 84194	MLC - 25	250	46.6	58.8	55		0.30	
SYIC - 18322	SKS6	120	35.997	-	-		2	0.22
SYIC - 18323	SKS10	200	29.627	30	27	1	0.25	
SYIC - 18324	SKS16	220	37.83	40	37		0.30	
SYIC - 18325	SKS25	235	40.757	55.1	51		0.40	
SYIC - 84018	TG75	253	75	-	-	3	0.30	
SYIC - 84019	TG100	260	46	60	52	1	0.40	
SYIC - 84020	TG150	272	64	82	67		0.50	
B11 - A - 11T20X200 - B	T20 - 200	200	-	-	T20	4	0.04	
B11 - A - 11T40X100 - B	T40 - 100	100			T40		0.04	
B11 - A - 11T40X200 - B	T40 - 200	200			T40		0.12	
B11 - A - 10T5X150 - B	T5 - 150	150			5	5	0.06	
B11 - A - 10T5X200 - B	T5 - 200	200					0.06	
B11 - A - 10T6X150 - B	T6 - 150	150					6	0.08
B11 - A - 10T6X200 - B	T6 - 200	200						0.10
B11 - A - 10T8X200 - B	T8 - 200				200	8	0.14	