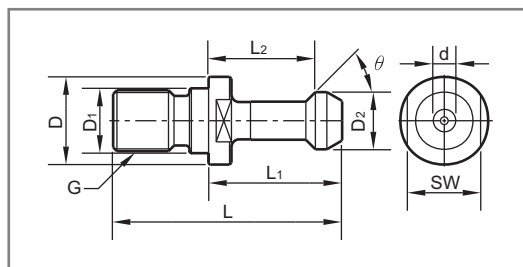


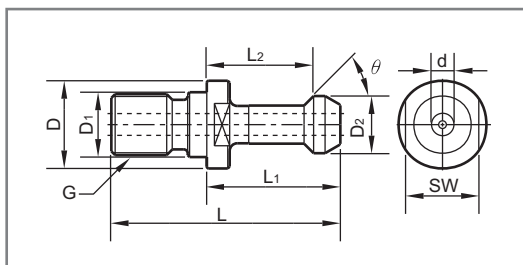
MAS P30/40/50



| Ordering Code | Type of Pull Stud | L | L1 | L2 | D | D1 | D2 | θ | G | SW |
|---------------|-------------------|----|----|----|------|------|----|----------|-----|----|
| 330000-100 | P30T-1 | 43 | 23 | 18 | 16.5 | 12.5 | 11 | 45° | M12 | 13 |
| -200 | -2 | | | | | | | 60° | | |
| 340000-100 | P40T-1 | 60 | 35 | 28 | 23 | 17 | 15 | 45° | M16 | 19 |
| -200 | -2 | | | | | | | 60° | | |
| -300 | -3 | | | | | | | 90° | | |
| 350000-100 | P50T-1 | 85 | 45 | 35 | 38 | 25 | 23 | 45° | M24 | 30 |
| -200 | -2 | | | | | | | 60° | | |
| -300 | -3 | | | | | | | 90° | | |

MAS P40/50

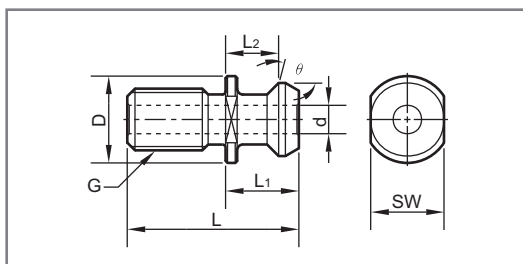
- With coolant hole.



| Ordering Code | Type of Pull Stud | L | L1 | L2 | D | D1 | θ | G | d | SW |
|---------------|-------------------|----|----|----|----|----|----------|-----|---|----|
| 340000-144 | P40T-1H | 60 | 35 | 28 | 23 | 17 | 45° | M16 | 4 | 19 |
| -244 | -2H | | | | | | 60° | | | |
| -344 | -3H | | | | | | 90° | | | |
| 350000-145 | P50T-1H | 85 | 45 | 35 | 38 | 25 | 45° | M24 | 5 | 30 |
| -245 | -2H | | | | | | 60° | | | |
| -345 | -3H | | | | | | 90° | | | |

ANSI B5.50

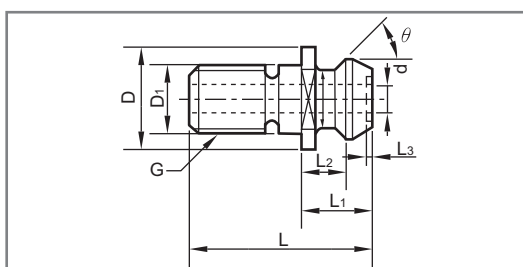
- ANSI/ASME B5.50-1985.
- For V-flange tool shanks for machining center with automatic tool changer.



| Ordering Code | Type of Pull Stud | L | L1 | L2 | D | d | θ | G | SW |
|---------------|-------------------|------|--------|--------|--------|------|----------|-----------|-------|
| 341000-501 | ANSI B5.50-40 | 38.1 | 16.256 | 11.176 | 23.876 | 7.1 | 45° | 5/8-11UNC | 31.75 |
| 351000-501 | -50 | 58.4 | 25.4 | 17.78 | 36.5 | 11.9 | 45° | 1"-8UNC | 19.05 |

MAZAK PULL STUDS

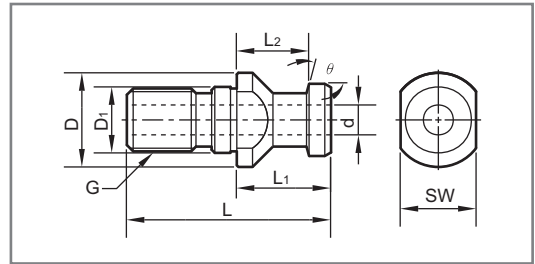
- With through hole for internal coolant.



| Ordering Code | Type of Pull Stud | L | L1 | L2 | D | D1 | d | θ | G |
|---------------|-------------------|------|------|-------|----|----|----|----------|-----|
| 340000-601 | MAZAK-BT40 | 44.1 | 19.1 | 14 | 22 | 17 | 7 | 45° | M16 |
| 340000-621 | -CAT40 | 44.1 | 16.1 | 11 | 22 | 17 | 7 | 45° | M16 |
| 350000-601 | -BT50 | 65.2 | 25.2 | 17.58 | 37 | 25 | 10 | 45° | M24 |

DIN 69872 Form A

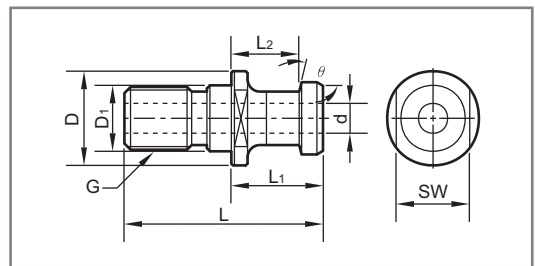
- With through hole for internal coolant.
- For DIN 69817 A tool holders.



| Ordering Code | Type of Pull Stud | L | L1 | L2 | D | D1 | d | θ | G | SW |
|---------------|-------------------|----|----|----|----|----|------|-----|-----|----|
| 330000-404 | DIN 69872-A30 | 44 | 24 | 19 | 17 | 13 | - | 15° | M12 | 14 |
| 340000-404 | -A40 | 54 | 26 | 20 | 23 | 17 | 7.0 | 15° | M16 | 19 |
| 350000-404 | -A50 | 74 | 34 | 25 | 36 | 25 | 11.5 | 15° | M24 | 30 |

JIS B6339 P

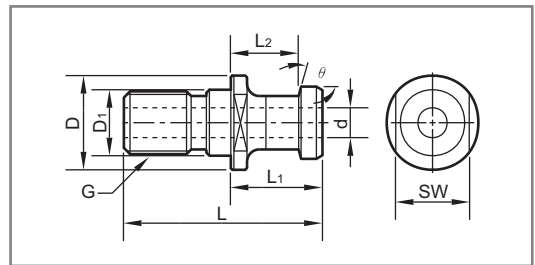
- For standard MAS BT tool holders, according to JIS B6339.
- With through hole for internal coolant.



| Ordering Code | Type of Pull Stud | L | L1 | L2 | D | D1 | d | θ | G | SW |
|---------------|-------------------|----|------|------|------|------|----|-----|-----|----|
| 330000-401J | JIS B6339-30P | 43 | 23.4 | 18.4 | 16.5 | 12.5 | 4 | 15° | M12 | 13 |
| 340000-401J | -40P | 54 | 29 | 23 | 23 | 17 | 7 | 15° | M16 | 19 |
| 350000-401J | -50P | 74 | 34 | 25 | 38 | 25 | 10 | 15° | M24 | 30 |

JIS B6339 PA / ISO 7338 / 2-A

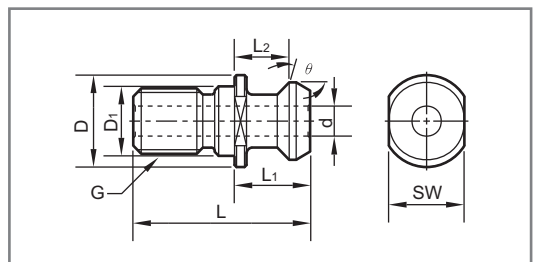
- According to JIS 6339-PA and same as ISO 7338 / 2-A and DIN69872 form A for DIN69871 form A tool holders.
- With through hole for internal coolant.



| Ordering Code | Type of Pull Stud | L | L1 | L2 | D | D1 | d | θ | G | SW |
|---------------|-------------------|----|----|----|----|----|------|-----|-----|----|
| 340000-404J | JIS B6339-40PA | 54 | 26 | 20 | 23 | 17 | 7 | 15° | M16 | 19 |
| 350000-404J | -50PA | 74 | 34 | 25 | 36 | 25 | 11.5 | 15° | M24 | 30 |

JIS B6339 PB / ISO 7338 / 2-B

- According to JIS 6339 PB and ISO 7338 / 2-B, for DIN69871 A tool holders.
- With through hole for internal coolant.



| Ordering Code | Type of Pull Stud | L | L1 | L2 | D | D1 | d | θ | G | SW |
|---------------|-------------------|------|-------|-------|------|----|-------|-----|-----|----|
| 340000-403J | JIS B6339-40PB | 44.5 | 16.4 | 11.15 | 22.5 | 17 | 7.35 | 45° | M16 | 18 |
| 350000-403J | -50PB | 65.5 | 25.55 | 17.95 | 37 | 25 | 11.55 | 45° | M24 | 30 |