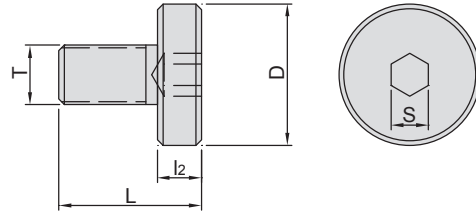




# SHELL MILL SCREWS (SPECIALLY USED FOR CAT FACE MILL ARBOR)

## SYIC-WF

華司螺絲



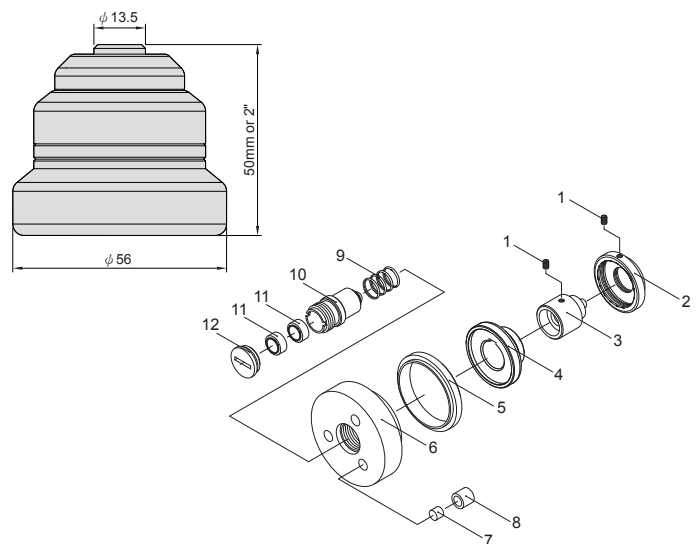
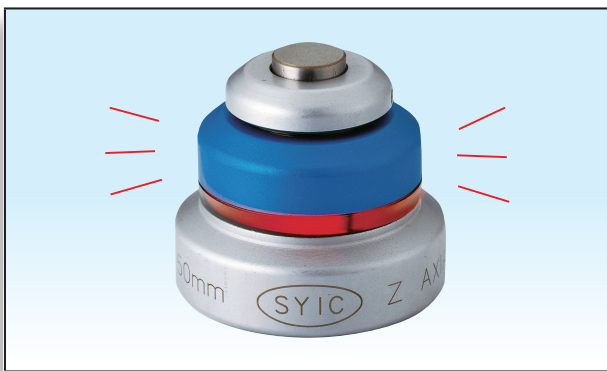
MODEL NO.	TYPE	D	L	l <sub>2</sub>	T	S	WEIGHT (KGS)
SYIC - WF - 0.5	1/2"	5/8" = 15.875	21.336	8.636	1/4" - 28UNF	3/16	0.01
SYIC - WF - 0.75	3/4"	7/8" = 22.225	34.798	9.398	3/8" - 24UNF	1/4	0.04
SYIC - WF - 1	1"	1-3/16" = 30.1625			1/2" - 20UNF	5/16	0.06
SYIC - WF - 1.25	1-1/4"	1-1/2" = 38.1	44.45	12.7	5/8" - 18UNF		0.16
SYIC - WF - 1.5	1-1/2"	1-7/8" = 47.625			3/4" - 16UNF	3/8	0.24
SYIC - WF - 2	2"	2-1/2" = 63.5	50.8	12.7	1" - 14UNF	1/2	0.42
SYIC - WF - 2.5	2-1/2"	3-1/8" = 79.375	57.15				0.60



# ZOP-50 Z AXIAL PRESET GAUGE OPTICAL TYPE

## SYIC-17905

ZOP - 50 光電式 Z軸設定器



- Height 50mm.
- With magnetic base.
- The red lamp will be on when being touched.
- Accuracy 0.005mm
- Combine vertical and horizontal in an unit.
- Weight: 0.5 kgs

MODEL NO.	NO.	NAME OF EACH PART
SYIC - 17905 - 01	1	Hexagon socket set screw
SYIC - 17905 - 02	2	Adjusting cap
SYIC - 17905 - 03	3	Sliding axle
SYIC - 17905 - 04	4	Connector
SYIC - 17905 - 05	5	Insulate seat
SYIC - 17905 - 06	6	End seat

MODEL NO.	NO.	NAME OF EACH PART
SYIC - 17905 - 07	7	Magnet
SYIC - 17905 - 08	8	Magnet copper pillar
SYIC - 17905 - 09	9	Spring
SYIC - 17905 - 10	10	Light shell set
SYIC - 17905 - 11	11	Battery
SYIC - 17905 - 12	12	Battery cap



# ZSI-50 Z AXIAL PRESET GAUGE SIMPLE TYPE (WITHOUT MAGNETISM)

B  
T

C  
A  
T

D  
A  
T

H  
S  
K

N  
T  
&  
M  
T

I  
S  
O

B  
O  
R  
I  
N  
G

S  
H  
R  
I  
N  
K  
F  
I  
T

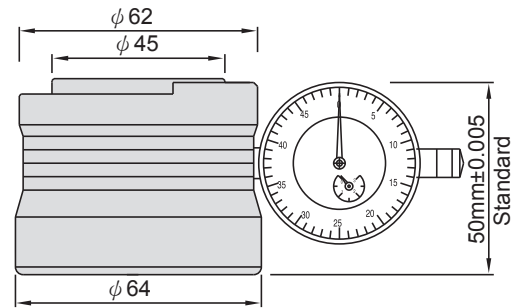
A  
C  
C  
E  
S  
S  
O  
R  
I  
E  
S

K  
I  
T

T  
E  
C  
H  
N  
I  
C  
A  
L  
I  
N  
F  
O

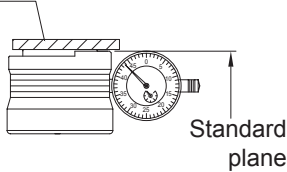
## SYIC-17906

### ZSI - 50 Z 軸設定器 無磁性 外插量錶式



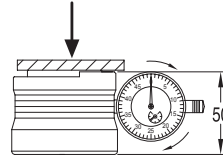
- Height: 50mm.

1. Parallel gauge  
Block gauge



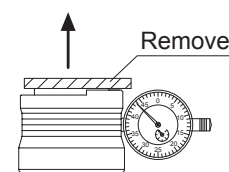
Please use the parallel gauge or block gauge to press standard plane.

2.



Turn the indicator, adjust the long needle to "0" and remember the short needle location.

3.



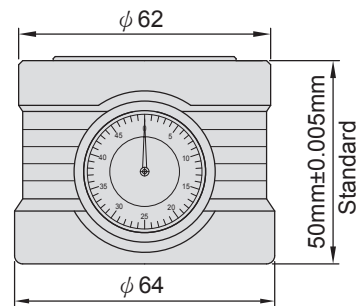
Remove the parallel gauge or block gauge.



# ZDS-50J Z AXIAL PRESET GAUGE (MAGNETIC)

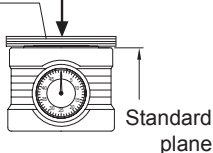
## SYIC-17909-J

### ZDS - 50J Z 軸設定器 有磁性 內藏量錶式



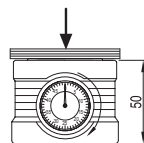
- Height: 50mm.

1. Parallel gauge  
Block gauge



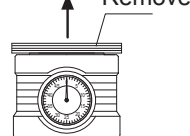
Please use the parallel gauge or block gauge to press standard plane.

2.



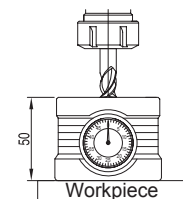
Turn the indicator and adjust the needle to "0".

3.

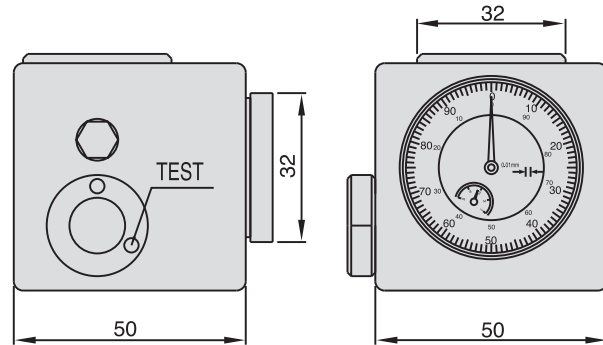


Remove the parallel gauge or block gauge.

4.

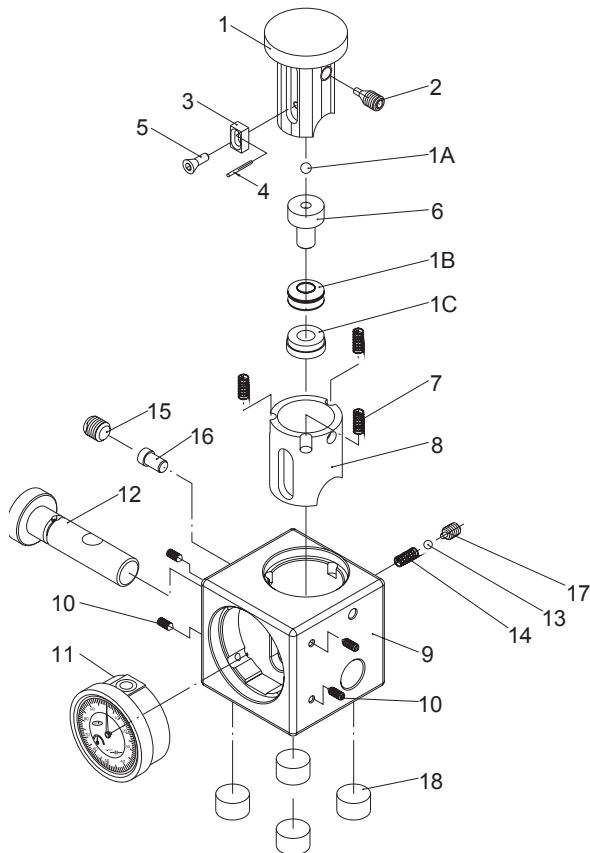


Put the whole unit on the workpiece. When cutter touched the probe face, please feed slowly to move the needle to "0". The cutter distance is now 50mm above the workpiece.



### HOW TO USE Z AXIAL PRESET GAUGE:

- Before use, make sure the dial indicator is accurate.
- First, turn the switch from "USE" to "TEST".
- Press the top of the Preset Gauge to the bottom until the dial indicator shows "zero", then turn the switch from "TEST" back to "USE".
- When the tool touches preset gauge and the dial indicator shows "zero", the distance between tool and workpiece is 50mm.



MODEL NO.	NO.	NAME OF EACH PART
SYIC - 17908 - 01	1	Sliding Axle
SYIC - 17908 - 01	1A	Steel Ball
SYIC - 17908 - 01B	1B	Disk Spring
SYIC - 17908 - 01	1C	Spring End Cover
SYIC - 17908 - 02	2	Micro-Adjust Screw
SYIC - 17908 - 03	3	Positioning Block
SYIC - 17908 - 04	4	Steel Ball
SYIC - 17908 - 05	5	Hex. Head Fixed Screw
SYIC - 17908 - 06	6	Micro-Adjust Axle
SYIC - 17908 - 07	7	Spring
SYIC - 17908 - 08	8	Sliding Axle Liner
SYIC - 17908 - 09	9	Body
SYIC - 17908 - 10	10	Fixed Screw
SYIC - 17908 - 11	11	Dial Indicator
SYIC - 17908 - 12	12	Return-To-Zero Rod
SYIC - 17908 - 13	13	Steel Ball
SYIC - 17908 - 14	14	Spring
SYIC - 17908 - 15	15	Fixed Screw
SYIC - 17908 - 16	16	Fixed Axle
SYIC - 17908 - 17	17	Fixed Screw
SYIC - 17908 - 18	18	Magnet Copper Pillar



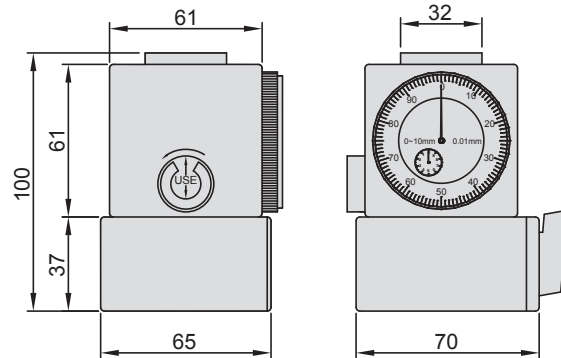
# ZDI-100 Z AXIAL PRESET GAUGE INDICATOR TYPE

SYIC-17910

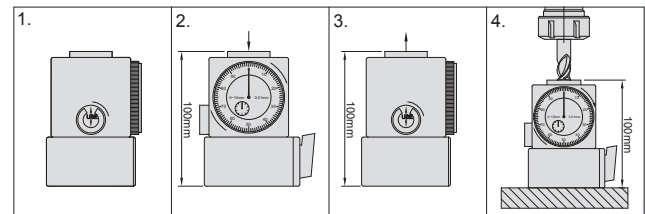
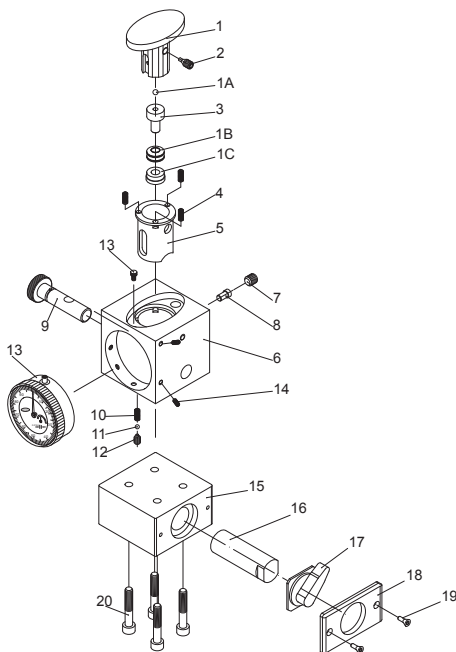
ZDI - 100 量錶式 Z軸設定器



T W PAT NO. M262301  
T W PAT NO. M289094



- Height 100mm.
- There is a magnetic design. One can turn on or turn off the magnetism by adjusting the switch.
- Adjust the dial indicator to "zero".
- Dial indicator for each increment: 0.01mm.
- Magnetic capacity: 80kg.
- Weight: 1.9 kgs.



### HOW TO USE Z AXIAL PRESET GAUGE:

1. Turn the Wheel on the side of the unit for the setting - zero point from "USE" to "TEST".
2. Press top of the gauge until small indicator needle shows zero. Keep pressure against it and then adjust the large indicator needle to zero.
3. Turn the switch back to "USE."
4. When the tool touches the top of the gauge and both dial indicators read zero, the cutter distance is now 100mm above the workpiece.

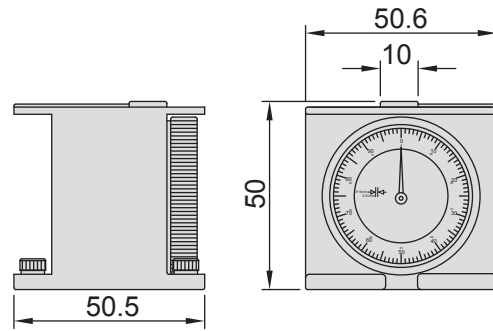
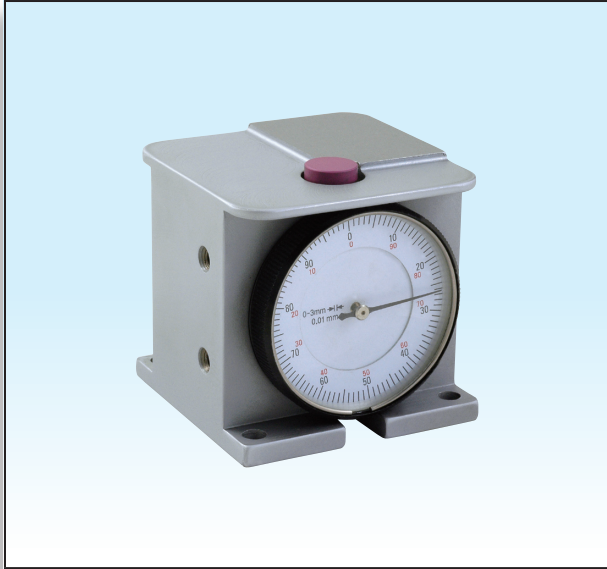
MODEL NO.	NO.	NAME OF EACH PART	MODEL NO.	NO.	NAME OF EACH PART
SYIC - 17910 - 01	1	Sliding Axle	SYIC - 17910 - 09	9	Return-To-Zero Rod
SYIC - 17910 - 01A	1A	Steel Ball	SYIC - 17910 - 10	10	Spring
SYIC - 17910 - 01B	1B	Disk Spring	SYIC - 17910 - 11	11	Steel Ball
SYIC - 17910 - 01C	1C	Spring End Cover	SYIC - 17910 - 12	12	Positioning Screw
SYIC - 17910 - 02	2	Micro-Adjust Screw	SYIC - 17910 - 13	13	Dial Indicator
SYIC - 17910 - 03	3	Micro-Adjust Axle	SYIC - 17910 - 14	14	Fixed Screw
SYIC - 17910 - 04	4	Spring	SYIC - 17910 - 15	15	Magnet Base
SYIC - 17910 - 05	5	Sliding Axle Liner	SYIC - 17910 - 16	16	Magnet Core Set
SYIC - 17910 - 06	6	Body	SYIC - 17910 - 17	17	Revolving Button
SYIC - 17910 - 06A	6A	Spring	SYIC - 17910 - 18	18	Magnet Base Cover
SYIC - 17910 - 07	7	Fixed Screw	SYIC - 17910 - 19	19	Magnet Core Set
SYIC - 17910 - 08	8	Fixed Screw	SYIC - 17910 - 20	20	Fixed Screw



# ZP-50P Z AXIAL PRESET GAUGE (MAGNETIC)

SYIC-17921

ZP - 50P Z 軸設定器



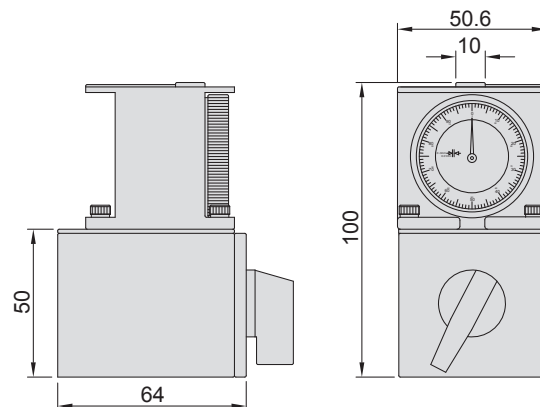
- Height: 50mm.
- MIN. DIAMETER: 0.01mm.
- MIN. PRESSURE f: 0.5N.



# ZP-100P Z AXIAL PRESET GAUGE (MAGNETIC)

SYIC-17922

ZP - 100P Z 軸設定器



- Height 100mm.
- There is a magnetic design. One can turn on or turn off the magnetism by adjusting the switch.

- Dial indicator for each increment: 0.01mm.
- MIN. DIAMETER: 0.01mm.
- MIN. PRESSURE f: 0.5N.