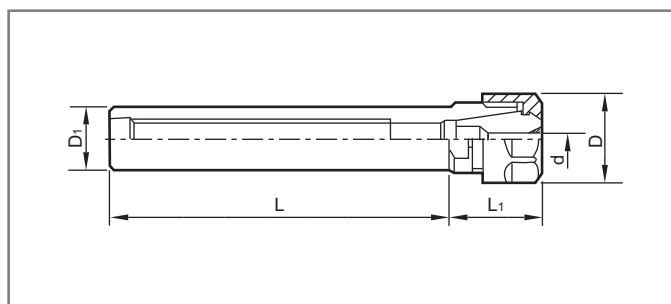


Cylindrical Shank Extension bar

Features:

- All short version L=50 are designed with side lock flat.

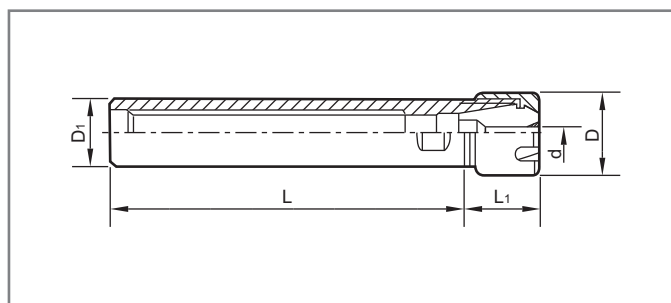


D1	Ordering Code	Type of Holder	L	L1	D	d	Collets
16	329100-2120	SL16-ER11-50(flat)	50	21	19	0.5-7	ER11
	-2140	BC16-ER11-100	100				
20	-3220	SL20-ER16-50(flat)	50	30	28	0.5-10	ER16
	-3240	BC20-ER16-100	100				
	-3260	-ER16-150	150				
25	-3320	SL25-ER16-50(flat)	50	30	28	0.5-10	ER16
	-3340	-ER16-100(flat)	100				
	-3360	BC25-ER16-150	150				
20	-4220	SL20-ER20-50(flat)	50	36	34	2-13	ER20
	-4240	BC20-ER20-100	100				
	-4260	-ER20-150	150				
25	-4320	SL25-ER20-50(flat)	50	36	34	2-13	ER20
	-4340	-ER20-100(flat)	100				
	-4360	BC25-ER20-150	150				

Cylindrical Shank Extension bar-mini

Features:

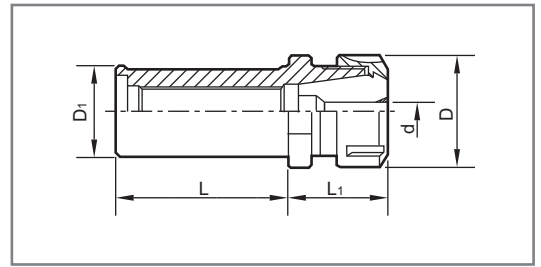
- Supplied with mini type clamping nut.
- All short version L=50 are designed with side lock flat.



D1	Ordering Code	Type of Holder	L	L1	D	d	Collets
16	329100-2122	SL16-ER11M-50(flat)	50	22	16	0.5-7	ER11
	-2142	BC16-ER11M-100	100				
	-3142	-ER16M-100	100				
20	-3222	SL20-ER16M-50(flat)	50	32	22	0.5-10	ER16
	-3242	BC20-ER16M-100	100				
25	-3262	-ER16M-150	150	32	22	0.5-10	ER16
	-3342	BC25-ER16M-100	100				
25	-3362	-ER16M-150	150	32	22	0.5-10	ER16
	-3362	-ER16M-150	150				
20	-4222	SL20-ER20M-50(flat)	50	35	28	2-13	ER20
	-4242	BC20-ER20M-100	100				
	-4262	-ER20M-150	150				
25	-4342	BC25-ER20M-100	50	35	28	2-13	ER20
	-4362	-ER20M-150	150				

Cylindrical Shank

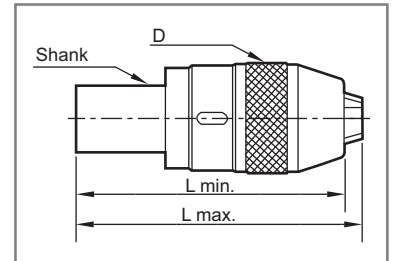
- With Cylindrical and side-lock flat types.



D1	Ordering Code	Type of Holder	L	L1	D	d	Collets
20	328100-5240	BC20-ER25-100	100	46	42	0.5-10	ER25
	-5260	-ER25-150	150				
25	-5320	SL25-ER25-100(flat)	100				
	-5340	BC25-ER25-150	150				
32	-5420	SL32-ER25-60(flat)	60	54	50	2-20	ER32
25	-6320	SL25-ER32-80(flat)	80				
32	-6440	SL32-ER32-100(flat)	100				
	-6460	BC32-ER32-150	150				
1"	-6720	BC1"-ER32-3"	3"	55	63	3-26	ER40
32	-7420	SL32-ER40-100(flat)	100				
40	-7520	SL40-ER40-100(flat)	100				
1 1/4"	-7920	BC 1-1/4"-ER40-3"	3"				

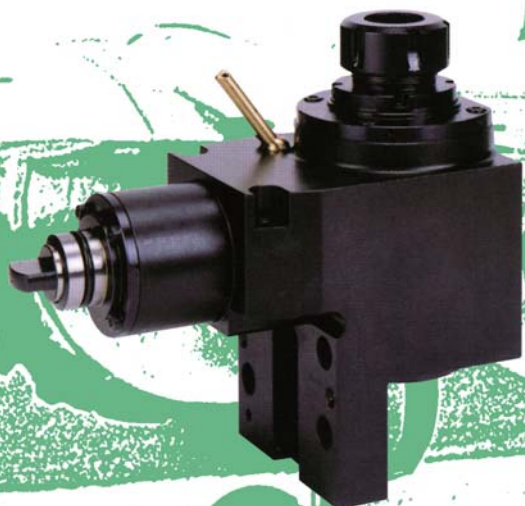
Taper and Cylindrical Shank Keyless Drill Chucks

- Integrated Keyless Drill Chuck
- Cylindrical shank, Morse Taper Shank and R8
- Morse taper shank is according to DIN 228 From B.



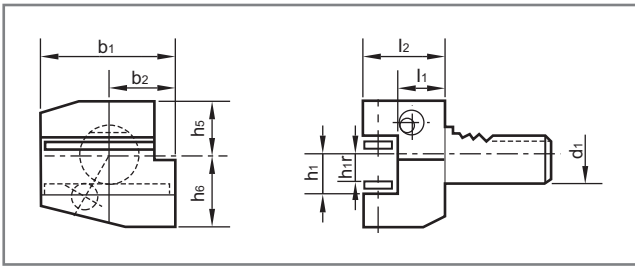
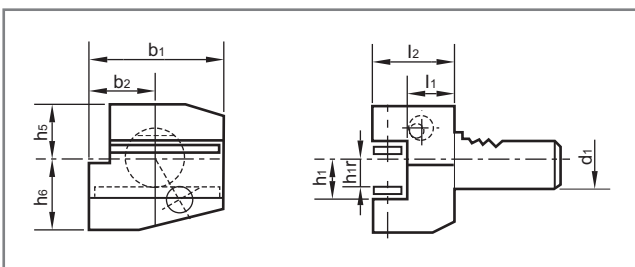
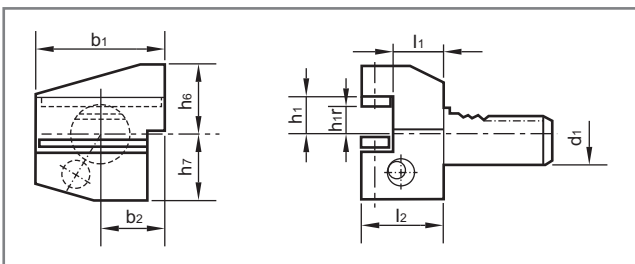
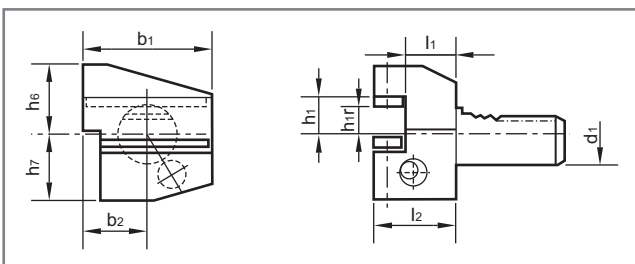
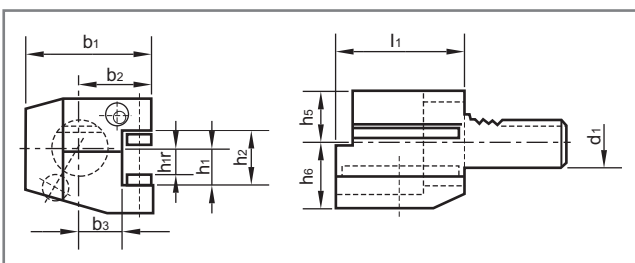
Shank	Ordering Code	Type of Holder	Clamping Range	D	Lmin.	Lmax.
MT2	362190-102	MT2-INT 8	0 - 8	35	149	157
	-202	-INT13	0 - 13	50.5	172	184
MT3	363190-202	MT3-INT13	0 - 13	50.5	190	201
	-302	-INT16	3 - 16	56	194	207
MT4	364190-202	MT4-INT13	0 - 13	50.5	216	227
	-302	-INT16	3 - 16	56	219	232
BC20	329190-201	BC20-INT 8	0 - 8	35	133	141
	-202	-INT13	0 - 13	50.5	153	164
BC25	-252	BC25-INT13	0 - 13	50.5	163	174
	-253	-INT16	3 - 16	56	162	175
BC32	-322	BC32-INT13	0 - 13	50.5	173	185
	-323	-INT16	3 - 16	56	184	197
R8	359190-202	R8-INT13	0 - 13	50.5	196	207
	-302	-INT16	3 - 16	56	198	211

Various VDI toolholder are available on request.



DIN 69880
DIN 1809
DIN 5480
DIN 5482

- Cylindrical shank in according to DIN ISO 10889-2:2006-01, which was DIN 69880-3:1995-05

FORM B1

FORM B2

FORM B3

FORM B4

FORM C1


*Hardness HRC58±2°

All functional surfaces are ground and supplied with coolant nozzle.

DIN ISO 10889-3:2006-01

Form B1 for external turning Radial, right hand, short

VDI size	30	40
Ordering Code	B1-30 X 20	B1-40 X 25
h ₁ /h _{1r}	20/16	25/20
b ₁ /b ₂	70/35	85/42.5
h ₅ /h ₆	28/38	32.5/48
l ₁ /l ₂	22/40	22/44

DIN ISO 10889-3:2006-01

Form B2 for external turning Radial, right hand, short

VDI size	30	40
Ordering Code	B2-30 X 20	B2-40 X 25
h ₁ /h _{1r}	20/16	25/20
b ₁ /b ₂	70/35	85/42.5
h ₅ /h ₆	28/38	32.5/48
l ₁ /l ₂	22/40	22/44

DIN ISO 10889-3:2006-01

Form B3 Radial, right hand, short

VDI size	30	40
Ordering Code	B3-30 X 20	B3-40 X 25
h ₁ /h _{1r}	20/16	25/20
b ₁ /b ₂	70/35	85/42.5
h ₆ /h ₇	38/35	48/42.5
l ₁ /l ₂	22/40	22/44

DIN ISO 10889-3:2006-01

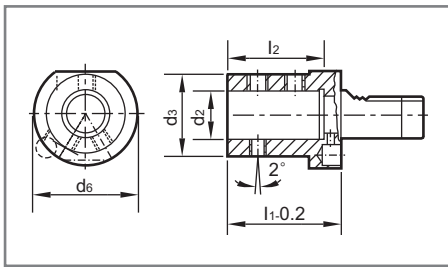
Form B4 Radial, right hand, short

VDI size	30	40
Ordering Code	B4-30 X 20	B4-40 X 25
h ₁ /h _{1r}	20/16	25/20
b ₁ /b ₂	70/35	85/42.5
h ₆ /h ₇	38/35	48/42.5
l ₁ /l ₂	22/40	22/44

DIN ISO 10889-4:2006-01

Form C1 Axial, right hand For face turning.

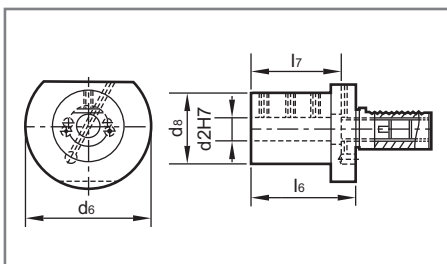
VDI size	30	40
Ordering Code	C1-30 X 20	C1-40 X 25
h ₁ /h _{1r}	20/16	25/20
b ₁ /b ₂ /b ₃	70/35/17	85/42.5/20.5
h ₂ /h ₅	29/28	34/32.5
h ₆ /l ₁	38/70	48/85

FORM E1


DIN ISO 10889-6:2006-01

Form E1 For drilling with side lock flat

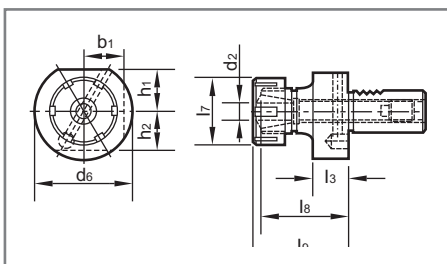
d2	20	25	32	40
VDI 30	E1-30 X 20	E1-30 X 25	E1-30 X 32	-
VDI 40	E1-40 X 20	E1-40 X 25	E1-40 X 32	E1-40 X 40
d3	40	45	52	60
l1/0.2	67	71/75	75	90
l2	54	59	63	73

FORM E2


DIN ISO 10889-6:2006-01

Form E2 For internal turning

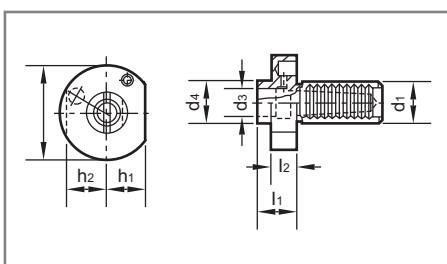
d2	16	20	25	32	40
VDI 30	E2-30 X 16	E2-30 X 20	E2-30 X 25	E2-30 X 32	-
VDI 40	E2-40 X 16	E2-40 X 20	E2-40 X 25	E2-40 X 32	E2-40 X 40
d8:VDI 30	55	58	62	68	-
VDI 40	56	56	62	72	83
l6:VDI 30	60	60	60	75	-
VDI 40	75	75	75	75	85
l7: VDI 30	51	51	51	63	-
VDI 40	61	61	61	61	75

FORM E4


DIN ISO 10889-6:2006-01

Form E4 For Drilling and Center Drills

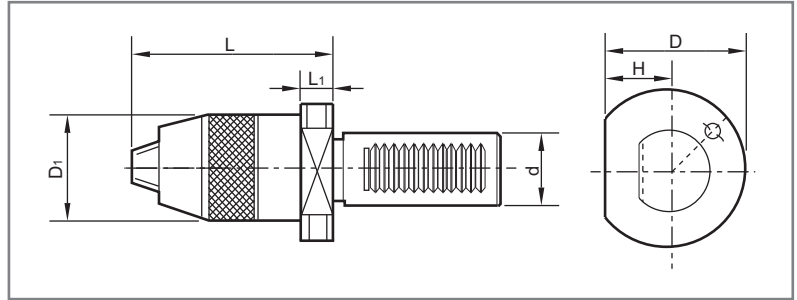
ER	25	32	40
Form E4 VDI 30	-	E4-30 X ER32	E4-30 X ER40
Form E4 VDI 40	-	E4-40 X ER32	E4-40 X ER40
d2 capacity	1-16	2-20	3-26
d6/d10:VDI 30	-	68/50	68/63
VDI 40	-	83/50	83/63
h1/l3/l9:VDI 30	-	28/22/55	28/26/75
VDI 40	-	32.5/22/75	32.5/22/75

FORM F


DIN ISO 10889-7:2006-01

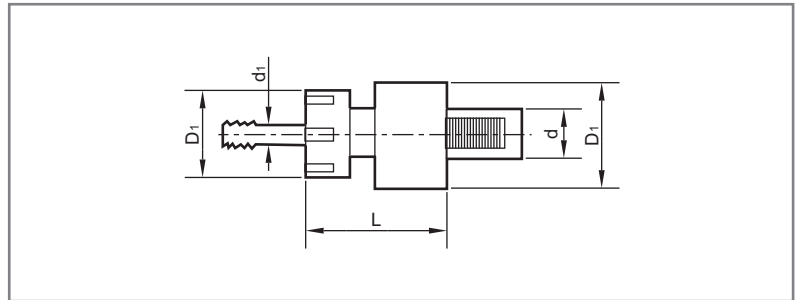
Form F For Morse Taper Drills

Morse Taper				
Form F VDI 30	F30-MT1	F30-MT2	F30-MT3	-
Form F VDI 40	-	F40-MT2	F40-MT3	F40-MT4
d3/d3/d4:VDI 30	68/12.065/52-	68/17.780/58	68/32.825/64	-
VDI 40	-	83/17.780/58	83/23.825/64	83/31.267/72
h1/h2/l1:VDI 30	28/30/25	28/30/42	28/30/66	-
VDI 40	-	32.5/-/34	32.5/-/58	32.5/-/78
l2:VDI 40	-	22	22	22

Keyless Drill Chuck


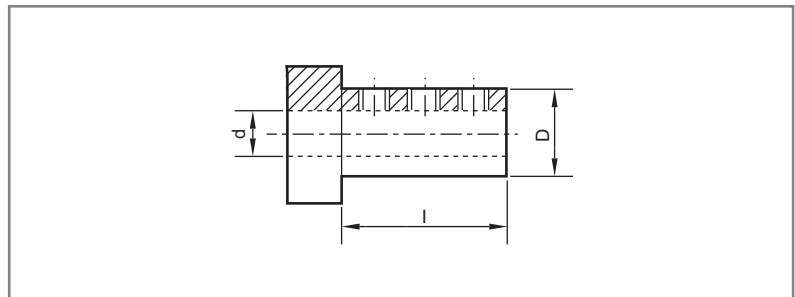
Capacity	1-13	3-16
VDI 30 VDI 40	chuck 30 X 13 chuck 40 x 13	- chuck 40 x 16
D/D1:VDI 30 VDI 40	68/51 83/51	- 83/58
H/L/L1:VDI 30 VDI 40	28/85/24 32.5/85/24	- 32.5/90/24

Tap Holder

 VDI Floating Tap Holder,
with extension and compression compensation


VDI Size	30	40
Ordering Code	TAP-30 X ER25	TAP-40 X ER25
Capacity	M3-M12	M3-M16
d1	1-16	1-16
D/D1	68/42	83/42
L	68	73

Reducing Sleeves

 for Reducing Clamping Diameter of
VDI Tool Holder, Form E2


	d							D	L
	8	10	12	16	20	25	32		
Ordering Code	Screw Type			Slot Type				25 32 40	50 60 75
	E25-8	E25-10	E25-12	E25-16	E25-20	-	-		
	E32-8	E32-10	E32-12	E32-16	E32-20	E32-25	-		
	E40-8	E40-10	E40-12	E40-16	E40-20	E40-25	E40-32		